

- Minutes:** Minutes of the Meeting of the Maules Creek Coal Community Consultative Committee held on **Thursday 19 February 2026** at the Boggabri Golf Club commencing at 11.37 am.
- Members Present:** Elizabeth O’Hara (EOH) – Community Representative, Robyn Grover (RG) – Community Representative, Steve Eather (SE) – Community Representative, Libby Laird (LL) – Community Representative, Emma Bulkeley (EB) – WHC, Darren Swain (DS) – WHC, Prashaant Nath (PN) – Acting General Manager, Maules Creek Operations.
- Apologies:** Cr Brett Dickinson (BD) – Narrabri Shire Council
- Observers:** Anna Curral – WHC.
- Independent Chair:** Michael J. Silver OAM (MJS)

Agenda Item	Discussion	Action/By Whom
1.	<b>Welcome and Apologies</b> – MJS welcomed everyone to the meeting particularly, Prashaant Nath, the interim General Manager Operations following the resignation of Jorge Moraga.	
2.	<b>Acknowledgement of Country</b> - The Chair acknowledged the Traditional Owners of the land on which the meeting is being held and their continuing connection to land, water, and culture, paying respects to their Elders past, present and emerging.	
3.	<b>Declaration of Pecuniary or Other Interests</b> – EOH holds a small quantity of Whitehaven shares. RG has a family member working at Maules Creek Coal Mine. MJS expenses as Chair are borne by the Proponent.	
4.	<b>Minutes of the Previous Meeting</b> – The minutes of the meeting of 30 October 2025 were approved on 2 December 2025.	
5.	<b>Business Arising from the Previous Minutes</b> Nil	
6.	<p><b>Actions</b></p> <p>6.1 MJS to follow up a response from DPHI in relation to Action 8.  <b>Response:</b> <i>DPHI confirm that the response from the independent auditor is correct. Independent audits are undertaken in accordance with the Department’s guideline “Independent Audit – Post Approval Requirements which sets the audit timeframes and processes. There is no requirement for CCC members to participate at the site during the audit inspection. It is noted that the auditor advised that he would consider the comments from CCC members as they related to the audit scope.</i></p> <p>6.2 EB to table an A3 map of the exploration holes at the next meeting.  <b>Response:</b> <i>Tabled</i></p> <p>6.3 MJS to seek advice from DPHI on groundwater reporting requirements.  <b>Response:</b> <i>DPHI advise that there is no prescriptive requirement to report based on AHD or mbg. It really comes down to being able to make sense out of groundwater level trends and as to whether the level triggers investigation or action. The information should be reported in a way that the community and regulators, and mine environmental team can make sense of the trends and data. AHD is useful as you can compare groundwater levels from a common reference point around the mine site. I note that DCCEEW in their annual reports have trend lines based on mbg (example Namoi Zone 1 Groundwater Source 2024 report <a href="https://publications.water.nsw.gov.au/watergroupjspui/bitstream/100/2534/1/Groundwater_Annual_Report_2024_-_Upper_Namoi_Zone_1_groundwater_source.pdf">https://publications.water.nsw.gov.au/watergroupjspui/bitstream/100/2534/1/Groundwater_Annual_Report_2024_-_Upper_Namoi_Zone_1_groundwater_source.pdf</a>).</i>  <i>The Water management plan for Maules Creek sets trigger levels using both mbg (for shallower alluvial bores) and mAHD for deeper bores – including within confined aquifers where pressure is being measured – so the reporting should be clear against what trigger range it is reporting against (either mbg or AHD) to allow easy comparison against the relevant TARP target. Maybe an option to report both.</i></p> <p>6.4 EB to provide a presentation on bat tracking at the next meeting.</p>	

	<b>Response: Contained in Proponent's Presentation.</b>	
<b>7.</b>	<p><b>Correspondence</b></p> <p><b>7.1 Outgoing</b></p> <ul style="list-style-type: none"> <li>• <b>NSW Department of Planning Housing and Infrastructure</b> – seeking a response to concerns raised by CCC members regarding the IEA process and advice on groundwater reporting requirements.</li> </ul> <p><b>7.2 Incoming</b></p> <ul style="list-style-type: none"> <li>• <b>NSW Department of Planning Housing and Infrastructure</b> – responding to concerns raised by CCC members regarding the IEA process and providing advice on groundwater reporting requirements.</li> <li>• <b>Narrabri Shire Council</b> – advising its delegates to the Maules Creek Coal CCC.</li> </ul>	
<b>8.</b>	<p><b>Environmental Monitoring Report</b></p> <p><i>A copy of the Monitoring Report is attached to the minutes.</i></p> <p>The Environmental Monitoring Report was distributed to members prior to the meeting. There were no questions raised in relation to the report.</p>	
<b>9.</b>	<p><b>Proponent's Presentation</b></p> <p><i>EB introduced the Proponent's Presentation. A copy of the presentation is attached to the minutes.</i></p> <p><b>Health and Safety</b></p> <p>The Committee noted the Health and Safety Performance data – PN explained the processes followed in injury management, prevention, and control. He noted the Total Recordable Injury Frequency Rate (TRIFR) for the year to date was 1.9.</p> <p><b>Environmental Monitoring</b></p> <p><b>Depositional Dust</b></p> <p>EB noted that the annual reporting period (12 monthly rolling annual average) remained low, being below the criteria of 4g/m2/month for the respective monitoring points. She noted that some samplers had been contaminated by bird dropping, decomposed insects or vegetable matter – the EPA has been advised of this contamination.</p> <p><b>HVAS</b></p> <p>EB advised that the High-Volume Air Sampler located at 'Olivedene' stayed well below the annual average. The Rolling Annual Average was recorded at 12.1 µg/m3, which is below the Annual Average Guideline of 30 µg/m3. MJS enquired whether the current dry climatic conditions had exacerbated dust issues. EB indicated that increased dust generation was primarily associated with specific activities.</p>	

**TEOM 1 (PM10)**

EB advised that the annual rolling averages for TEOM 1 was 9.5 µg/m<sup>3</sup> against the criteria of 30 µg/m<sup>3</sup>.

**TEOM 3 (PM10)**

The annual rolling average for TEOM 3 was 11.0 µg/m<sup>3</sup> at the end of the fourth quarter. EB commented that there are some peaks on the graph due to localised activity and attributed to gravel roads and Harparary Road being bitumen sealed.

**Air Quality Monitoring**

The Committee examined the Air Quality Monitoring Rolling 12 months graph noting that Maules Creek Mine is the light blue line in the lower section of the graph. EB noted that the Maules Creek monitor is consistently lower than the other monitors in the region.

**Monitoring Locations**

The Committee noted the various groundwater monitoring locations.

**Groundwater**

EB noted that standing water levels over the last 10 years had remained stable although the ground water level increased slightly towards the end of 2025.

**Biodiversity Management**

EB reported that the Whitehaven Biodiversity Feral Animal Control program has continued with the following results in the last quarter:

- 1,120 out of total 1,732 feral pigs removed were from the Maules Biodiversity properties;
- 199 out of the total 371 feral goats removed were from the Maules Biodiversity properties;
- 146 out of total 283 Canid Pest Ejectors (1080) triggered, or foxes removed were from the Maules Biodiversity properties.

EB also advised that work on noxious weed control was ongoing with spot spraying/jetting on the Maules Biodiversity Properties:

- 31.8ha of Woody Weeds (Sweet Briar, Blackberry and Prickly Pear) were sprayed.
- 10.6ha of Grasses (Coolatai Grass, African Lovegrass and Rhodes Grass) were sprayed.
- 66.8ha of Broadleaf Weeds such as General Broadleaf, Pattersons Curse, St John's Wort, Noogoora Burr, Fleabane, Saffron Thistle, General Thistles & Variegated Thistles were sprayed.
- 193.5ha of tracks sprayed as part of the track maintenance.

EB outlined the other current biodiversity projects and works plus others program undertaken in the last quarter. She made mention of the completion of the Threatened Flora Translocation Program which has seen relocation of Pomaderris and Pultenaea.

EB also advised that the improvements to the Onavale Cultural Precinct, which will support a teaching location for the local Aboriginal community, will be completed in the coming week.

LL enquired whether the presence of rabbits is increasing. EB responded that she had not noticed any increase. EB advised that Local Land Services is undertaking a shoot program in respect of all feral animals.

### **Microbat Capture and Tracking**

EB referenced **Action 27** and spoke to the Microbat Capture and Tracking study that aims to detail the movements and roost locations of microbats after being removed from roosts in trees that have been cleared. She advised that Dr Anna McConville oversaw the radio-tracking component of the project in 2025 alongside EcoPlanning ecologists.

EB indicated that Bats are captured as they crawl out of felled trees or coaxed out into catch bags. Microbats have transmitters fitted and are released after dark on the same date as capture at a release point as close as possible to the location that they were captured. EB added that during the 2025 clearing activities eight bats were fitted with transmitters.

EOH enquired were the Microbat Capture and Tracking study can be reviewed. EB advised that it is contained within the Biodiversity Management Plan.

### **Project Continuation**

#### **Assessment and Determination Process**

DS provided an overview of the status of the Maules Creek Continuation Project.

DS advised that responses to public, organisations and government submissions were made within a Submissions Report in October 2025. Subsequently, Whitehaven provided a response to various agencies feedback on the Submissions Report in December 2025.

EOH enquired whether the Minister for Planning will refer the Proposal to the Independent Planning Commission (IPC). DS noted that the Minister may refer the Proposal to the IPC in accordance with the legislation. LL indicated that agency submissions were late going up on Department's website – DS noted that they were now on the website.

DS advised that the DPHI will prepare an assessment report on the Proposal prior to the Minister or the IPC determining the application.

	<p><b>Community</b></p> <p><b>Aboriginal Representative on the CCC</b> DS reported that advertisements continue to run advertisements seeking nominations for an Aboriginal representative on the Community Consultative Committee. No nominations have been received.</p> <p><b>Community Investment</b> DS advised that \$96,609 has been provided in community partnerships and donations.</p> <p>DS explained Whitehaven’s support for rural higher education, through sponsorship of the Country Universities Centre (CUC) North West, reinforcing its commitment to community-driven initiatives. CUC North West provides vital study spaces, academic guidance, mentoring, and industry connections to students in regional NSW, aiming to make university education more accessible and meaningful. DS indicated that the funding support is designed to enhance study-resource availability and strengthen local career-pathway connections linked to industry and employers. Mention was also made regarding the contribution to support the South Inverell Bear Eaters Group.</p> <p>EOH enquired as to how applicants should apply for grants and the process involved, noting that the Maules Creek Fairfax Public School bus was determined by an assessment at management level. DS responded by noting that anyone in the community may apply for a grant or support. He highlighted that in respect of grants from the Community Fund a Community Committee determines these. Other requests for financial assistance are assessed internally, on their merits by the business, with grants drawn from a discretionary fund.</p>	
10.	<p><b>Other Agenda Items</b></p> <p>Nil</p>	
11.	<p><b>General Business</b></p> <p><b>11.1 Penalty Notices</b> – EOH noted that a penalty notice had been issued to Maules Creek Coal for an infringement which occurred on 24 February 2025 and requested information on the penalty amount. EB advised that this was a legal matter, as such no comment would be provided.</p> <p><b>11.2 Continuation Plans</b> LL raised several questions regarding the implications of the Project Continuation Plans:</p> <p>11.2.1 Are there plans to re-orient the pit and expand production in a different area of the Maules Creek Valley going to increase noise and dust levels before 2035? <b>Response:</b> DS took this matter on notice and subsequently advised that the noise and dust reports are in the Continuation Project EIS, noting that the Project is required to adhere to the approved criteria for noise and air quality, wherever the project is approved to mine.</p>	

11.2.2 We were led to believe that the Continuation project plans were to apply from 2035, why wasn't this made clear to the community before the Continuation Project was lodged?

**Response:** EB advised that if the proposed Continuation Project modification is not approved by 2028 then the mine would move into closure mode from 2031. She noted that this matter has been discussed at previous meetings.

11.2.3 Is the mine outside the approved footprint now? Is there a need to move to the north?

**Response:** PN advised that the mine is not beyond the approved footprint. He indicated that operations are constrained and without approval of the Continuation Project it can be expected that production will ramp-down from 2031 which is the pinch-point for the mine.

LL commented that media reports suggest that when Paul Flynn, Managing Director Whitehaven was talking to investors it was difficult to confirm, or otherwise, whether the mine is now outside its approved footprint. DS enquired as to the source of the media reports.

**Chair's note:** The Proponent advises that if the Continuation Project is approved, it will allow the pit to be reorientated. This will make the mine more efficient, which is what is stated by Paul Flynn in the media report. The media report can be found at <https://www.investing.com/news/transcripts/earnings-call-transcript-whitehaven-coal-sees-strong-q2-2026-growth-93CH-4471800>

11.2.4 Will the proposed water transfer pipeline to transfer water out of Maules Creek be metered and the data available publicly?

**Response:** EB advised that the pipeline between the Tarrawonga and the Maules Creek mine is not approved. The transfer of water from Maules Creek is theoretical at this stage and will be subject to licence conditions that are imposed by the DPHI during the determination process. At this stage MCC will not be able to comment on the reporting requirements of such a pipeline. The Vickery – Tarrawonga pipeline is approved but not yet constructed.

### **11.3 Transitioning Off**

EOH commented that given the scheduled closure of Tarrawonga Coal Mine in 2030 and the need for the approval of the Continuation Project to maintain mining operations at Maules Creek – she questioned what happens after the mine closes and the impact on the community. What will be the impact on individuals and business. EOH expressed an interest in the discussions and actions being held in the Hunter Valley concerning transitioning from coal mining. MJS commented that he would be discussing the implications of the mine closures or potential changes in operations with both Narrabri and Gunnedah Councils.

	<p><b>11.4 Darren Swain</b> DS advised he would be retiring from Whitehaven Coal at the beginning of May 2026. This would be his last meeting of the CCC. RG thanked DS for his involvement and support of the CCC during his time with Whitehaven. MJS echoed RG's comments and extended best wishes to him on behalf of the Committee for the future.</p>	
<b>12.</b>	<p><b>Next meeting</b> The next meeting is scheduled for 14 May 2026.</p>	

Meeting Closed: 12.40 pm.

Approved:

**Michael J. Silver OAM**  
Independent Chair

25 March 2025

**Appendix 1: Actions**

Action No.	Description	Date Raised	Page No.	Status
1	MJS to review February 2024 minutes.	15.05.24	2	COMPLETED 24.06.24
2	MJS to respond to R. Druce that the matter needs to be taken up with NSC and the RFS	15.05.24	2	COMPLETED 24.06.24
3	MJS to respond to Mr Laird that there are fundamental issues that need to be addressed.	15.05.24	2	COMPLETED 24.06.24
4	EM to advise how groundwater data is sourced.	15.05.24	3	COMPLETED 26.08.24
5	MJS to contact UNSW regarding availability of ground water data.	15.05.24	3	COMPLETED 16.08.24

6	DS to provide locations of monitoring bores.	15.05.24	4	COMPLETED 26.08.24
7	MJS to discuss environmental representative on the CCC with DPIE	15.05.24	4	COMPLETED 08.08.24
8	MJS to advise DPHI of concerns raised by CCC members regarding the IEA process.	13.11.24	2	COMPLETE 19.02.26
9	EB to confirm current locations of TEOM monitors	13.11.24	4	COMPLETED 13.02.24
10	MJS to write to DPHI detailing the potential breach of the conditions of consent in respect of membership of the CCC.	13.11.24	3	COMPLETE 22.11.24
11	JdeK to provide responses to questions on Methane Emissions and Methane Abatement.	13.11.24	6	COMPLETE 16.01.25
12	EB to advise whether there will be forest land clearing in February 2025	13.11.24	7	COMPLETE 13.02.25
13	EB to provide numbers and genus of euthanised fauna during 2024	13.11.24	7	COMPLETE 13.02.25
14	EB to confirm employee transfer numbers from WCC mine to MCC mine	13.11.24	7	COMPLETE 13.02.25
15	EB to advise the water bore that engaged in the standing water level spike in September 2024.	13.02.25	5	COMPLETE 15.05.25
16	EB to ensure that on all future maps of the mine environs presented to the CCC that property names are noted on the maps.	13.02.25	6	COMPLETE 15.05.25
17	EB to check whether a property sale in the area was to Whitehaven.	13.02.05	6	ONGOING
18	EB to provide detail on the depth of the highwall and associated dimensions of the proposed final void relative to current approved void	13.02.25	6	COMPLETE 15.05.25
19	EB to provide area to be cleared of vegetation associated with the Continuation Project.	13.02.25	7	COMPLETE 15.05.25
20	MJS to prepare an amended meeting program for the May CCC meetings.	13.02.25	8	COMPLETE 23.04.25
21	EB to advise the scale and depth of the current void.	15.05.25	2	COMPLETED 24.07.25
22	EB to provide a link to the Environmental Report.	15.05.25	5	COMPLETE 24.07.25
23	EB to provide the number of exploration holes drilled since April 2024 and their distribution.	15.05.25	6	COMPLETE 24.07.25
24	MJS to follow up a response from DPHI in relation to Action 8.	04.09.25	2	COMPLETE

				<b>19.02.26</b>
<b>24</b>	<b>That DG advise the depth of the bore holes in the vicinity of Horse Arm and Middle Creeks</b>	<b>04.09.25</b>	<b>5</b>	<b>COMPLETE</b> <b>30.10.25</b>
<b>25</b>	<b>EB to table an A3 map of the exploration holes at the next meeting.</b>	<b>30.10.25</b>	<b>3</b>	<b>COMPLETE</b> <b>19.02.26</b>
<b>26</b>	<b>MJS to seek advice from DPHI on groundwater reporting requirements.</b>	<b>30.10.25</b>	<b>5</b>	<b>COMPLETE</b> <b>19.02.26</b>
<b>27</b>	<b>EB to provide a presentation on bat tracking at the next meeting</b>	<b>30.10.25</b>	<b>6</b>	<b>COMPLETE</b> <b>19.02.26</b>

# Maules Creek Coal Mine

CCC Meeting

Q4 2025

# MCC Health and Safety Performance

- Total Recordable Injury Frequency Rate (TRIFR) 1.9
- Potential Level 4+ Hazards = 455 FY26
- Critical controls verified 100%

## PL4+ Hazards

PL4+H FR (WHC)

306.5

PL4+H FR (Site)

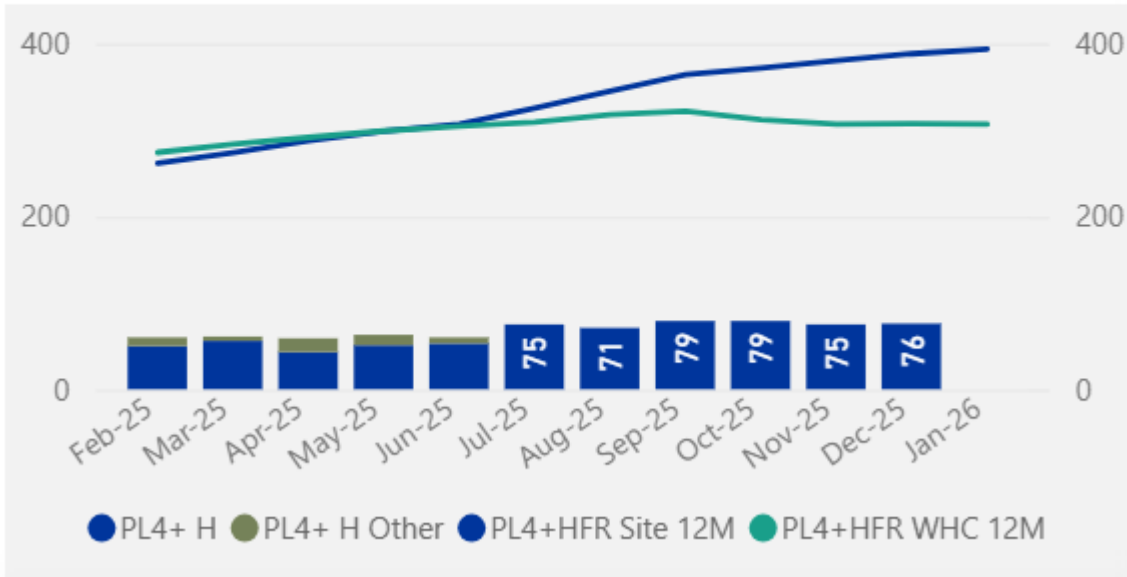
393.4

PL4+H MTD

76

PL4+H FYTD

455



## Total Recordable Injuries Freq Rate (TRIFR)

TRIFFR (Site) 12M

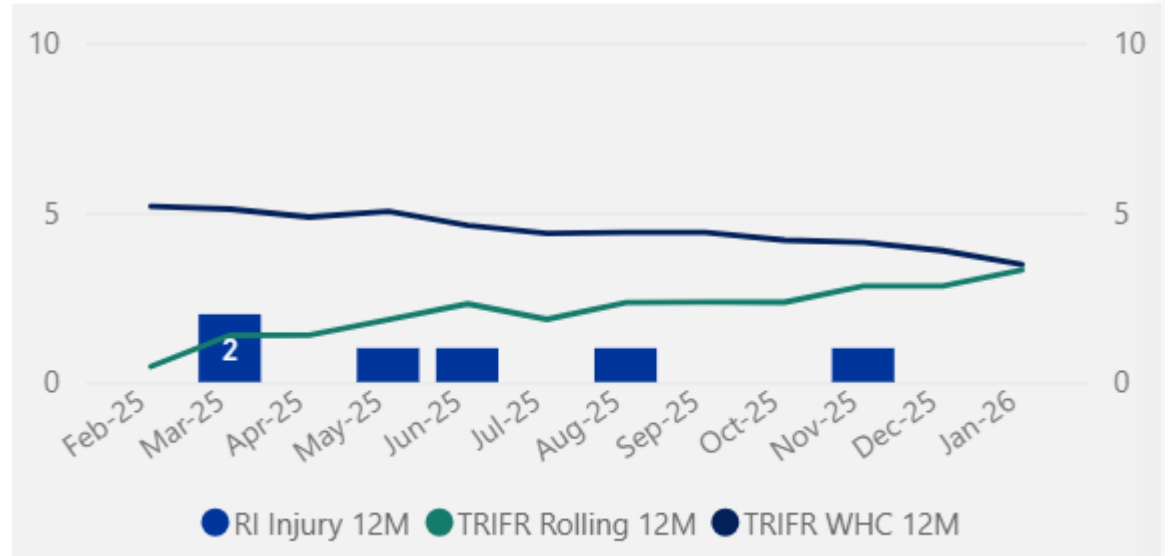
3.3

TRIFR MTD

0.0

TRIFR FYTD

1.9



# Environmental Monitoring

Summarised for Q4.

Full detail in the Monitoring Report  
supplied



# Environmental Monitoring

Q4 2025 – Air Quality Monitoring



# Depositional Dust

The annual reporting period (12 monthly rolling annual average) remained below the relevant Project Approval (PA 10\_0138) criteria of 4g/m<sup>2</sup>/month for the respective monitoring points.

MONTH	MC1	MC2	MC3	MC4
October	0.8	4.4c	0.9	19.6c
November	2.1	0.6	2.2	7.7c
December	13.1c	2.1	1.3	11.9c
<b>12 MONTH ROLLING AVERAGE</b>	<b>2.2</b>	<b>1.8</b>	<b>1.8</b>	<b>1.2</b>

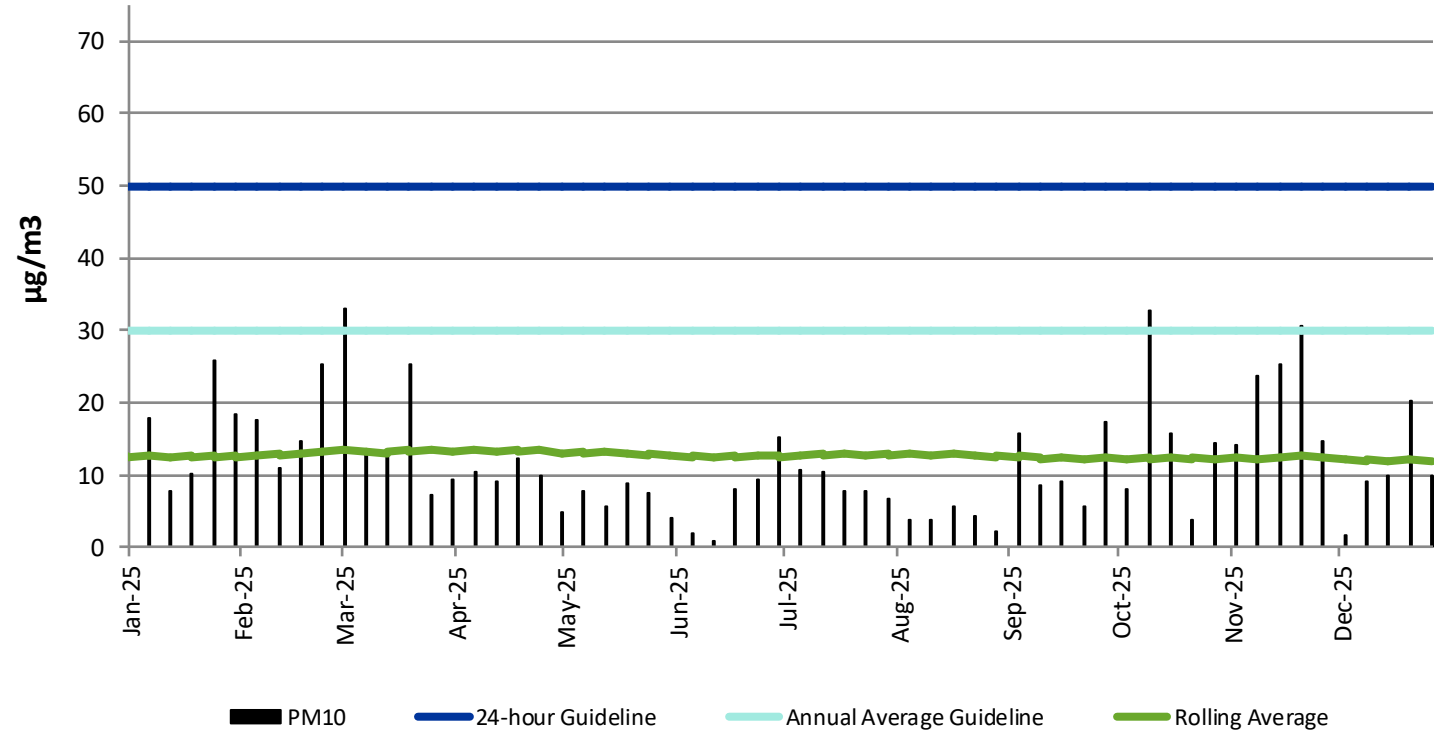
<sup>c</sup> samples contaminated by bird dropping, decomposed insects or vegetable matter.

# HVAS

## High Volume Air Sampler

- The HVAS monitor is located on 'Olivedene'
- Data is publicly available
- No exceedances recorded during the 24-hour average of 50  $\mu\text{g}/\text{m}^3$
- The Rolling Annual Average was recorded at **12.1  $\mu\text{g}/\text{m}^3$** , which is below the Annual Average Guideline of 30  $\mu\text{g}/\text{m}^3$ .

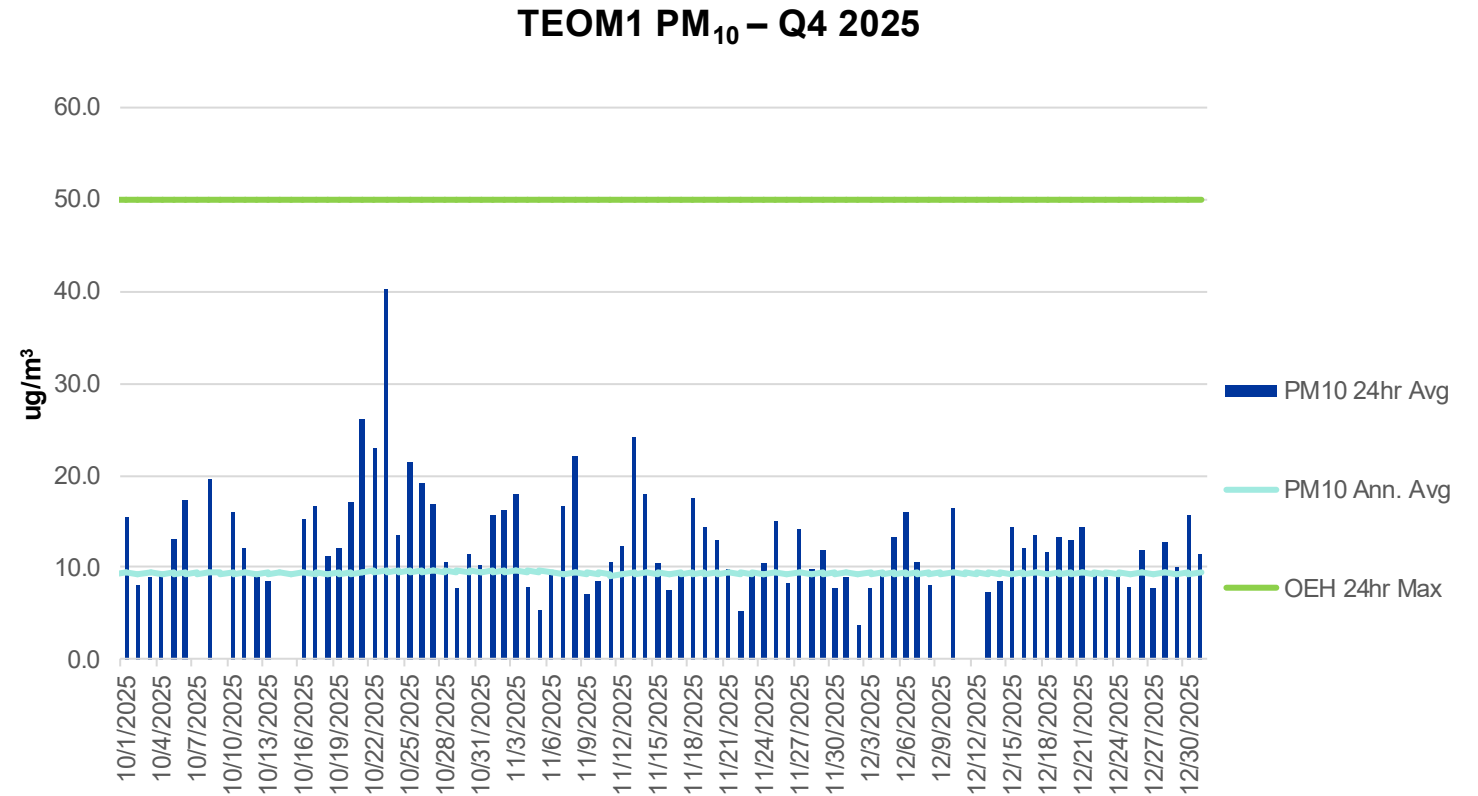
HVAS (PM10) - Olivedene



# TEOM 1 (PM10)

## Tapered element oscillating microbalance

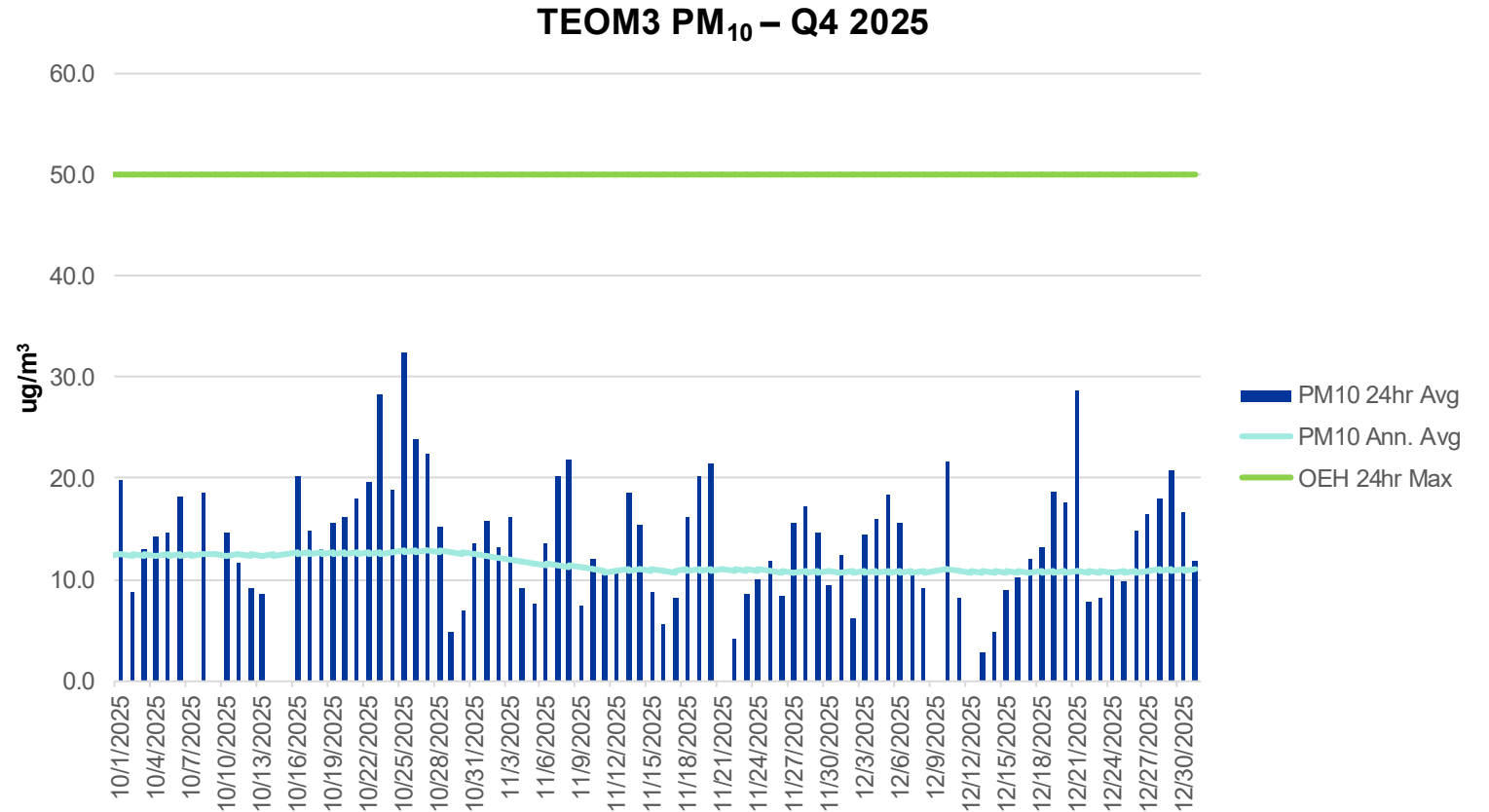
- Publicly available results of TEOM1 available on the EPA website.
- Annual rolling average for TEOM 1 was 9.5  $\mu\text{g}/\text{m}^3$  on the 31<sup>st</sup> of December 2025 (criteria 30 $\mu\text{g}/\text{m}^3$ ).



# TEOM 3 (PM10)

## Tapered element oscillating microbalance

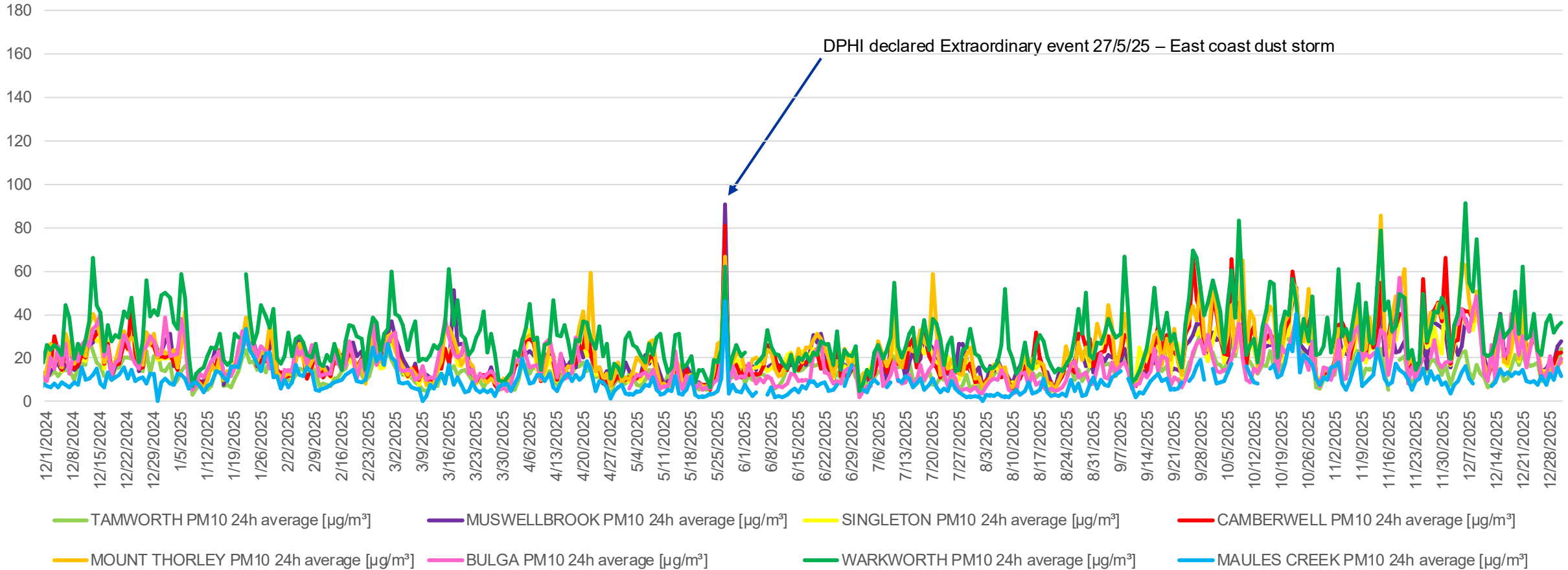
- Annual rolling average for TEOM 3 was 11.0  $\mu\text{g}/\text{m}^3$  on the 31<sup>st</sup> of December (criteria 30 $\mu\text{g}/\text{m}^3$ ).



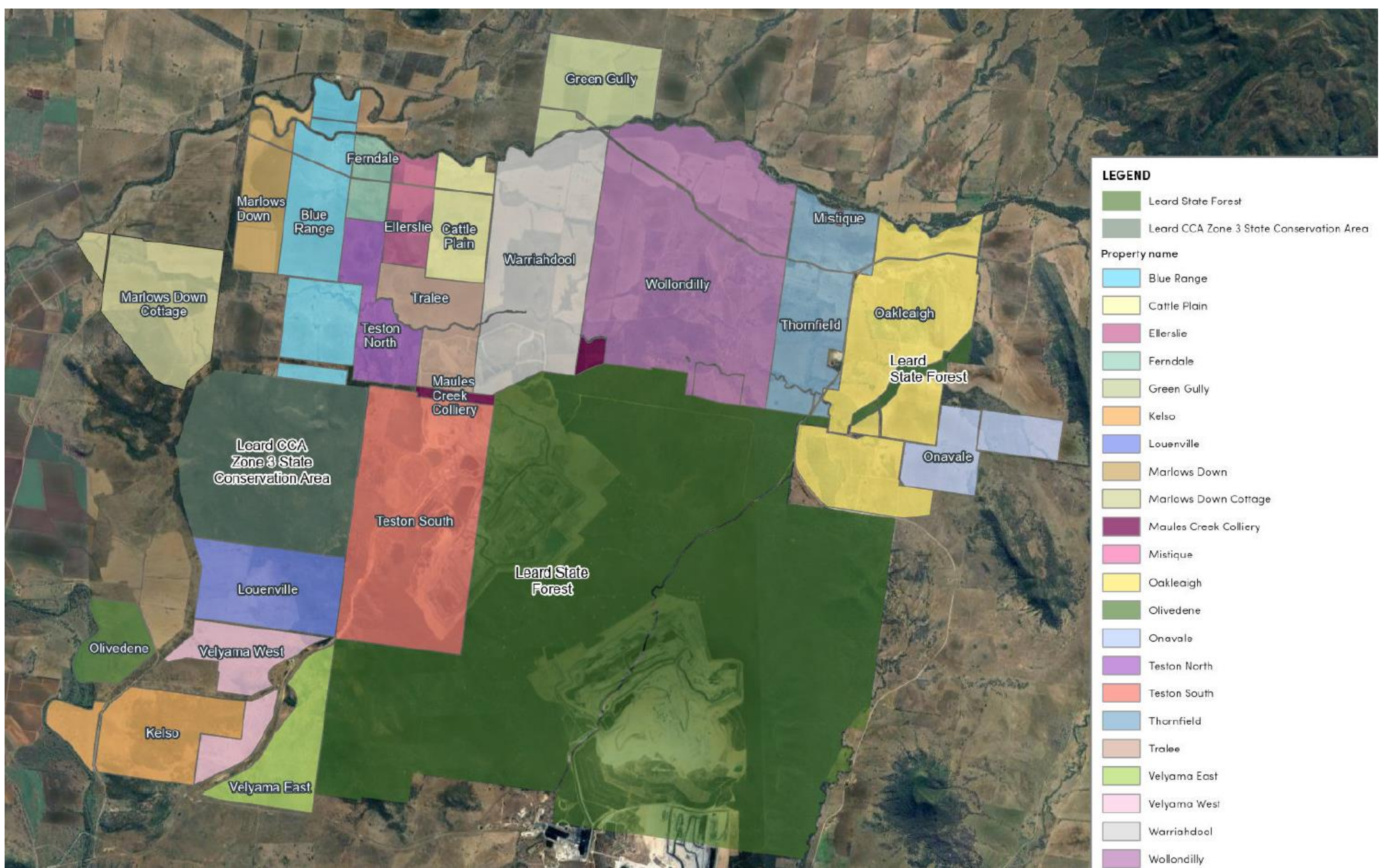
# Air Quality Monitoring Rolling 12 Months

Annual Reporting Data 1 December 2024 – 31 December 2025

Regional Air Quality PM10 Comparison



12 monthly	TAMWORTH PM10	MUSWELLBROOK PM10	SINGLETON PM10	CAMBERWELL PM10	MOUNT THORLEY PM10	BULGA PM10	WARKWORTH PM10	MAULES CREEK PM10
<b>Annual Average</b>	13.9	20.4	19.4	21.1	22.8	17.2	30.0	9.6
<b>Max 24hr Ave</b>	80.5	90.9	65.5	80.8	85.5	57.2	91.3	45.9

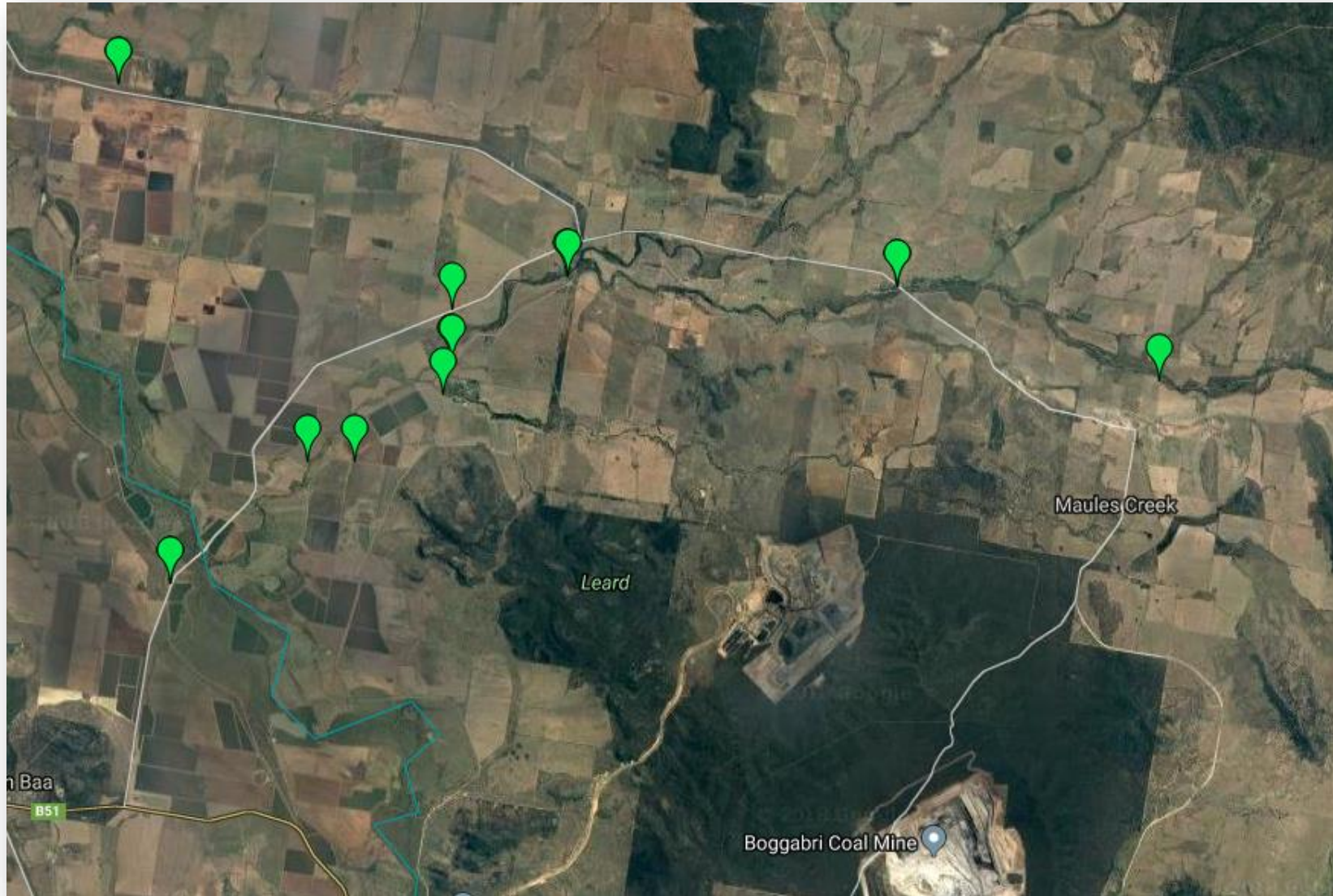


# Environmental Monitoring

Q4 2025 – Groundwater

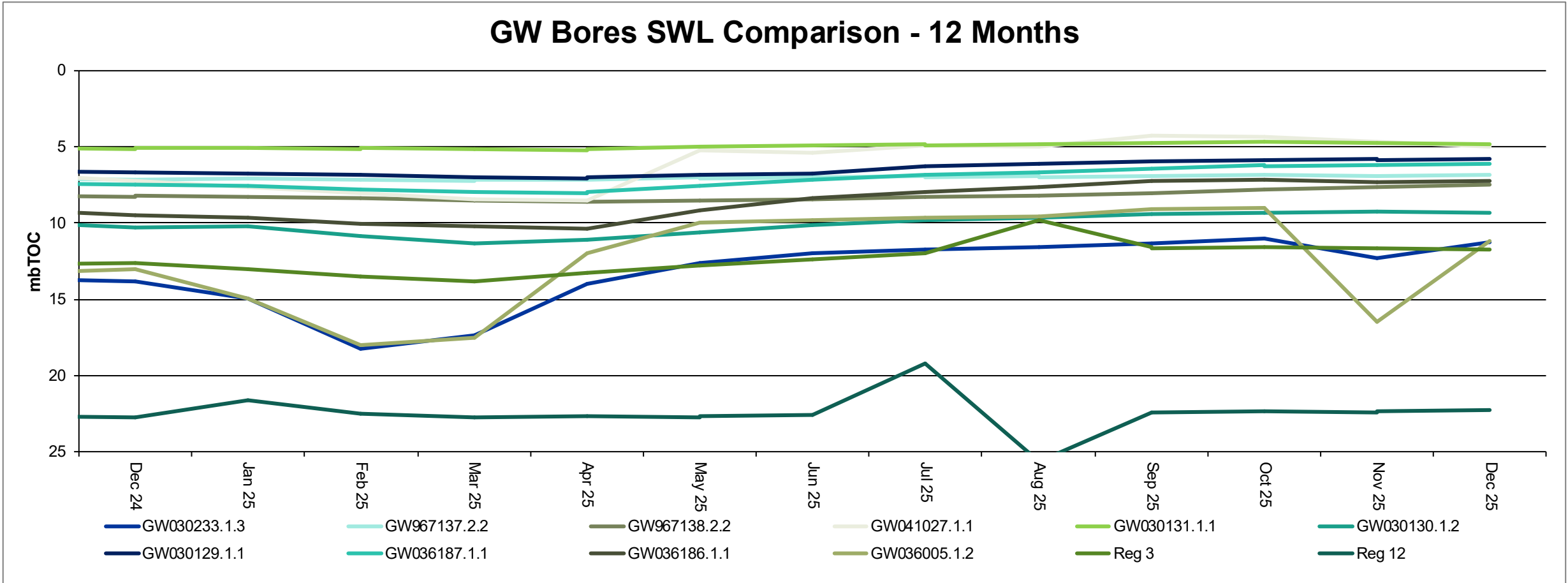


# Monitoring Locations



# Groundwater Levels

## GW Bores SWL Comparison - 12 Months

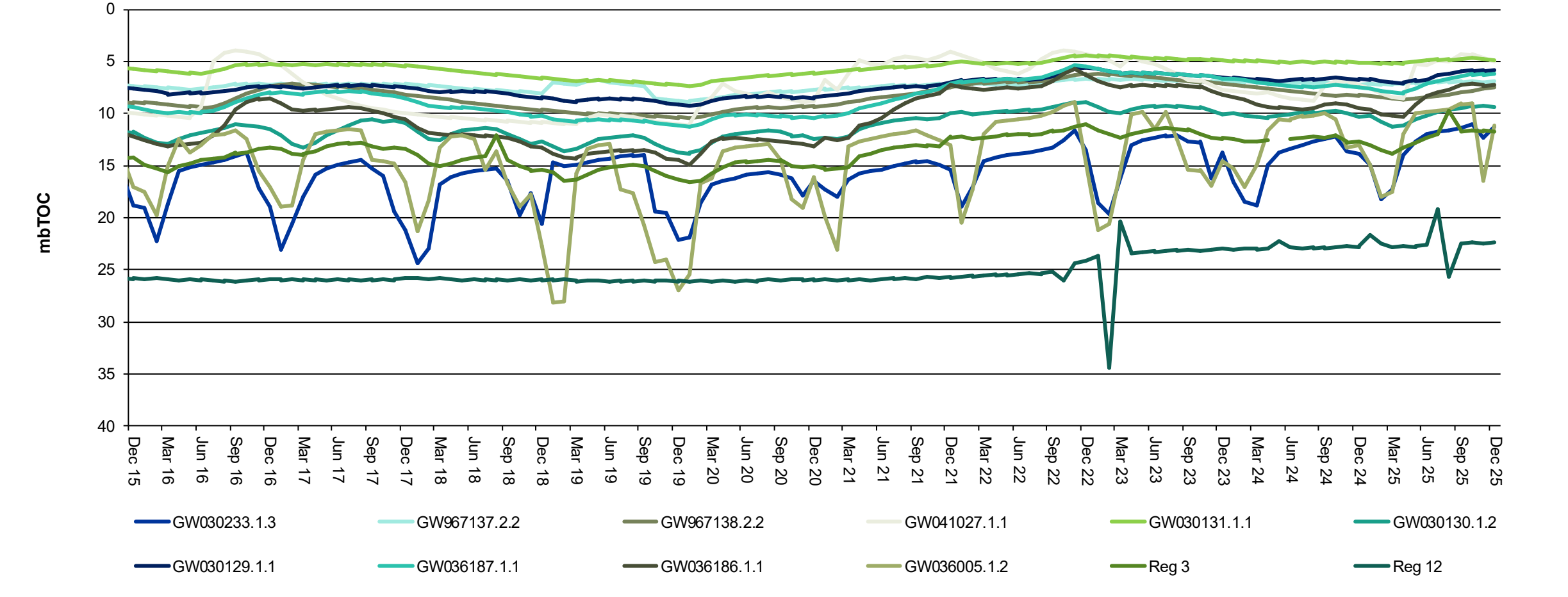


Source: NSW DPI- Water & MCCM monitoring data

\* Note Reg12 and Reg3 both within Boggabri Volcanics

# Groundwater Levels

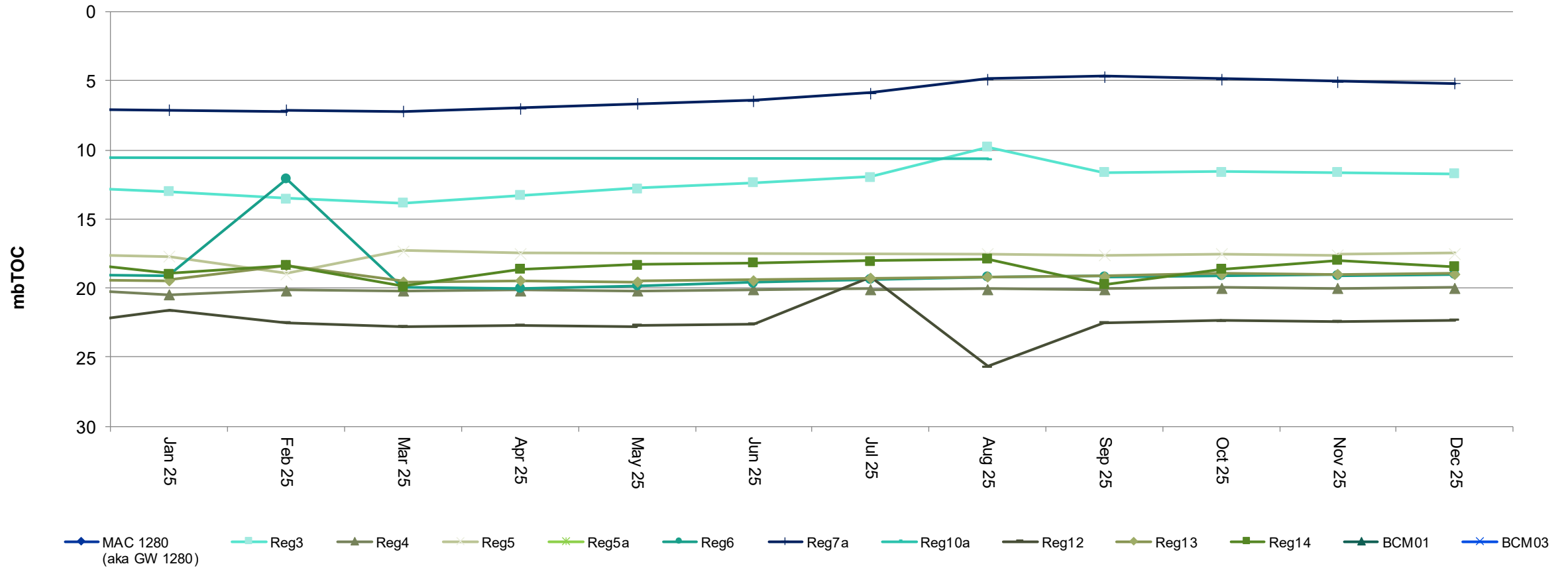
## GW Bores SWL Comparison - 10 Years



Source: NSW DPI- Water & MCCM monitoring data  
 \* Note Reg12 and Reg3 both within Boggabri Volcanics

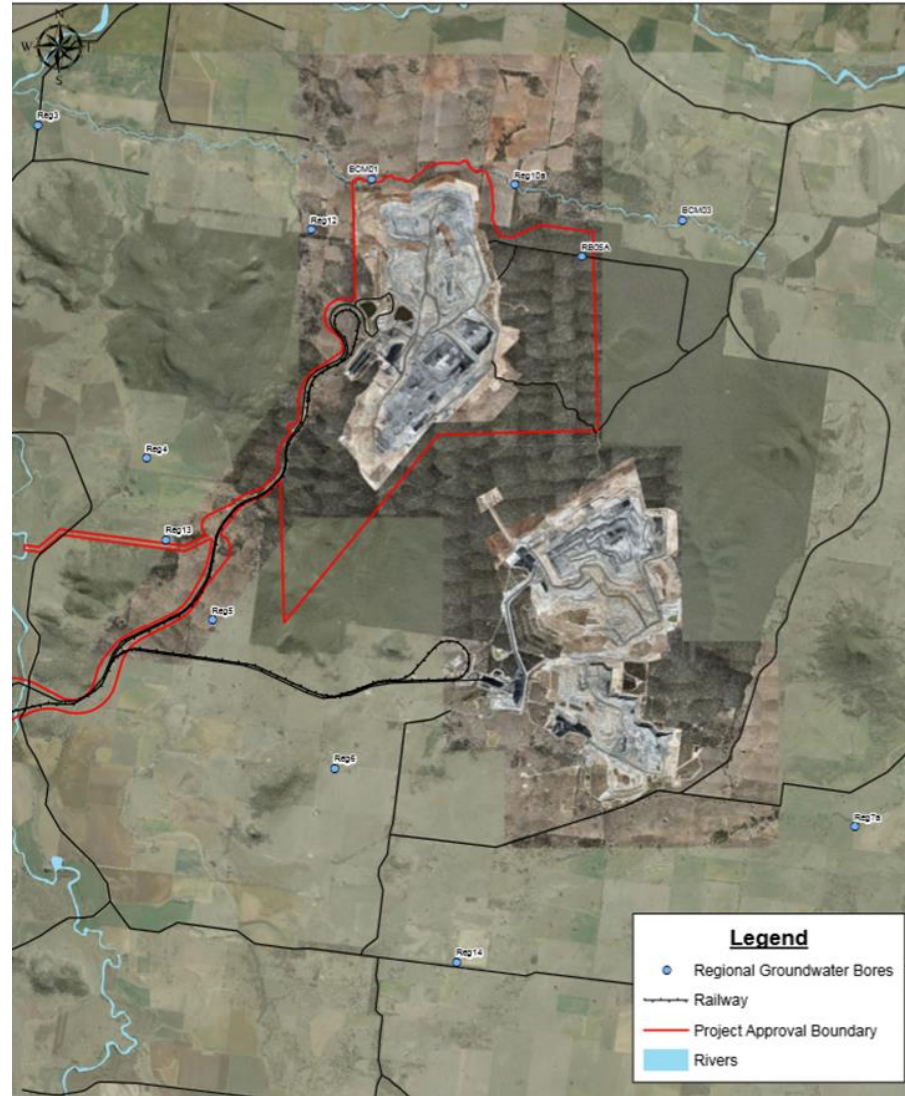
# Standing Water Levels

## Regional GW - Standing Water Level



NB Fluctuation shown in February 2025 are due transcription errors with subsequent levels returning to previous ranges

# Standing Water Levels



# Environmental Monitoring

Q4 2025 – Biodiversity



# Biodiversity Management

## Feral Animal Management

Most recent routine Whitehaven Biodiversity Feral Animal Control program (October to December 2025) results were:

- 1,120 out of total 1,732 feral pigs removed were from the Maules Biodiversity properties;
- 199 out of the total 371 feral goats removed were from the Maules Biodiversity properties;
- 146 out of total 283 Canid Pest Ejectors (1080) triggered, or foxes removed were from the Maules Biodiversity properties.

## Weed Control

During October to December 2025 the following weed control was undertaken via spot spraying/jetting on the Maules Biodiversity Properties:

- 31.8ha of Woody Weeds (Sweet Briar, Blackberry and Prickly Pear) were sprayed.
- 10.6ha of Grasses (Coolatai Grass, African Lovegrass and Rhodes Grass) were sprayed.
- 66.8ha of Broadleaf Weeds such as General Broadleaf, Pattersons Curse, St Johns Wort, Noogoora Burr, Fleabane, Saffron Thistle, General Thistles & Variegated Thistles were sprayed.
- 193.5ha of tracks sprayed as part of the track maintenance.



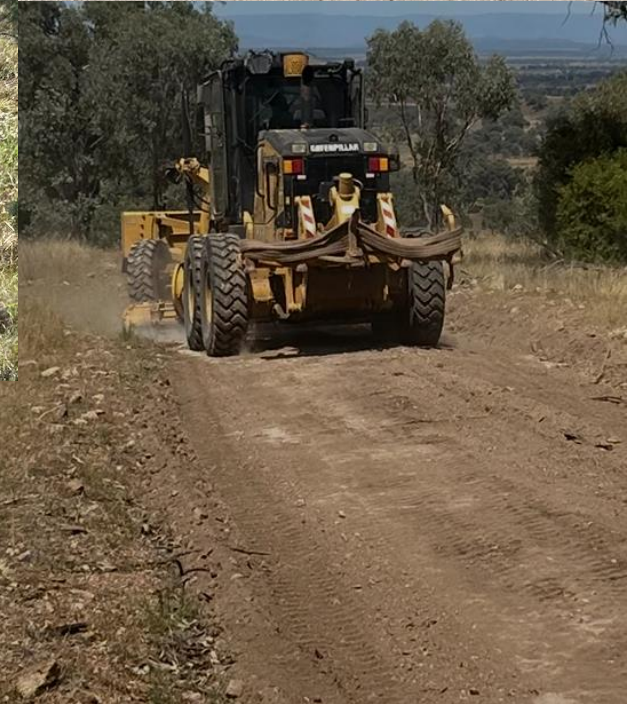
# Biodiversity Management

## Other Biodiversity Projects and Works Undertaken in Q4 2025

- Ongoing Annual Firebreak Track Maintenance Program;
- Ongoing Pest Animal Management Program;
- Ongoing Targeted Weed Spraying of seasonal weeds;
- Quarterly Threatened Flora Inspections;
- Completed Threatened Flora Translocation Programs (Pomaderris, Pultenaea);
- Completed Spring Flora Monitoring;
- Continued Annual Fauna Monitoring
- Commenced Heritage Management construction works.

## Upcoming Biodiversity Projects and Works for Q1 2026

- Continue Pest Animal Management Program January to March 2026;
- Continue Seasonal Weed Control Programs;
- Continue Firebreak Track Maintenance Program;
- Continue Property Development for Track and Fencing Works;
- Continue Threatened Flora Translocation Program maintenance;
- Complete Heritage Management construction works;
- Commence Annual Ecological Burn Program planning;
- Commence Revegetation Tree Planting.



# Microbat Capture and Tracking

- The study aims to detail the movements and roost locations of microbats after being removed from roosts in trees that have been cleared at MCCM.
- The aim of this program is to indicate whether microbat species can relocate successfully to other roosts, despite clearance of roost trees.
- Dr Anna McConville oversaw the radio-tracking component of the project in 2025 along side EcoPlanning ecologists
- Bats are captured as they crawl out of felled trees or coaxed out into catch bags
- Microbats have transmitters fitted and are released after dark on the same date as capture at a release point as close as possible to the location that they were captured.
- During the 2025 clearing activities 8 bats were fitted with transmitters
- Two species were captured during 2025; Broad-nosed bat and Gould's Wattled Bat



# Project Continuation

CCC Meeting Q4 2025

# Environmental Assessment Update

- Whitehaven responded to public, organisations and government submissions within a Submissions Report in October 2025.
- Available via the DPPI Major Project portal (at the following link: <https://www.planningportal.nsw.gov.au/major-projects/projects/maules-creek-continuation-project>)
- Following this, some government agencies provided additional feedback on the Submissions Report.
- Whitehaven has provided a response to various agencies feedback on the Submissions Report in December 2025.
- Engagement is continuing and further information is being prepared to provide additional responses.



# EIS Approval Process Update

- Scoping Report lodgement – [Complete](#)
- Secretary’s Environmental Assessment Requirements (SEARs) issued by DPHI on 26 October 2023 – [Complete](#)
- Site Verification Certificate granted over the proposed Mining Lease Application area – [Complete](#)
- EPBC Referral lodged on 15 July 2024 – [Complete](#)
- EIS lodgement May 2025 – [Complete](#)
- EIS exhibition occurred in June to August 2025 via DPHI Major Projects Portal – [Complete](#)
- Whitehaven to respond to all submissions via Response to Submissions report to be lodged via DPHI Projects Portal – [Complete](#)
- Whitehaven addressing additional agency comments on the Submissions Report – **Pending**



# Community

Q4 2025



# Aboriginal Representative on the CCC

- Advertisements continue to run in the Gunnedah Times and Narrabri Courier
- Advertisements continue to be displayed on the MCC website
- No applications have been forthcoming
- Please direct anyone who is interested to apply through the website or through application to the Chair.

## Community

[MAULES CREEK CCC MEMBER DETAILS AND CONTACTS](#) →

### Community Consultative Committee applications

---

The Maules Creek Community Consultative Committee (CCC) is looking for a mix of people who live locally or are members of a local community or stakeholder group (eg social, environment, Aboriginal or industry) to contribute constructively to committee discussions, attend around four meetings a year, and communicate information about the mine's social and environmental operations between the committee and the broader community. Committee membership is voluntary. Whitehaven employees and contractors are not eligible for appointment to the committee as a community representative.

To make an Expression of Interest to join the Maules Creek CCC, please review the criteria, complete an application form and return it to the independent chairperson of the CCC at [maulescreekcoalccc@gmail.com](mailto:maulescreekcoalccc@gmail.com).

↓ [COMMUNITY REPRESENTATIVE NOMINATION FORM](#)

↓ [OTHER STAKEHOLDER GROUP REPRESENTATIVE NOMINATION FORM](#)

**EXPRESSION OF INTEREST**

**NOMINATIONS ARE OPEN FOR APPOINTMENT OF TWO COMMUNITY MEMBERS TO THE MAULES CREEK COAL MINE COMMUNITY CONSULTATIVE COMMITTEE**

We are seeking nominations from people who live locally, or are members of local community or stakeholder groups having environmental interests or who are Aboriginal to fill two positions on our Maules Creek Coal Community Consultative Committee.

Community consultative committees play an important role in ensuring proponents engage with the community and stakeholder groups on approved state significant projects.

These committees provide a forum for open dialogue between the proponent and representatives of the local community, stakeholder groups and local councils on issues directly relating to the project.

Please note that employees of and contractors to Maules Creek Coal are not eligible for appointment to the committee as a community representative.

Your role as a committee member will be voluntary.

You will have the opportunity to contribute constructively to committee discussions, attend about four meetings a year, and communicate information about the mine's social and environmental operations between the committee and the broader community.

*If you would like to apply, please address the selection criteria that can be found in the nomination form at [whitehavencoal.com.au/our-business/our-projects/maules-creek-mine/](http://whitehavencoal.com.au/our-business/our-projects/maules-creek-mine/) under the Community tab. Nominations are open until the 19th September 2024.*

Contact the Independent Chair, Mike Silver 0427 723 747 for more information.

Completed nomination forms must be sent to the independent chairperson of the Community Consultative Committee at: [maulescreekcoalccc@gmail.com](mailto:maulescreekcoalccc@gmail.com) or PO Box 37 Gunnedah NSW 2380.

# NSW Community Investment

\$96,609 provided to 18 organisations



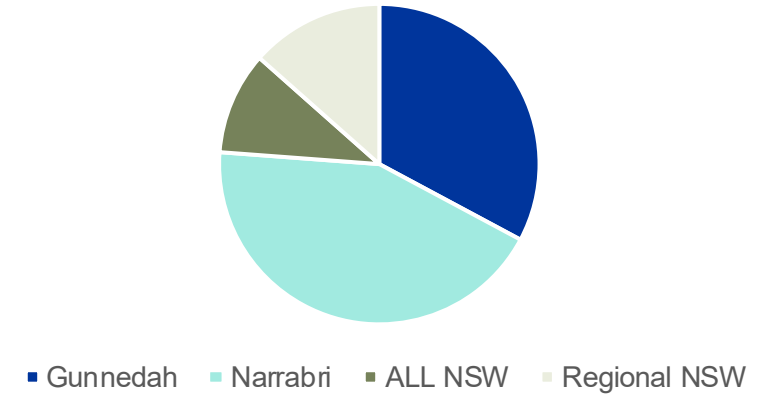
Whitehaven at the Country Universities Centre North West graduation evening

Organisations included:

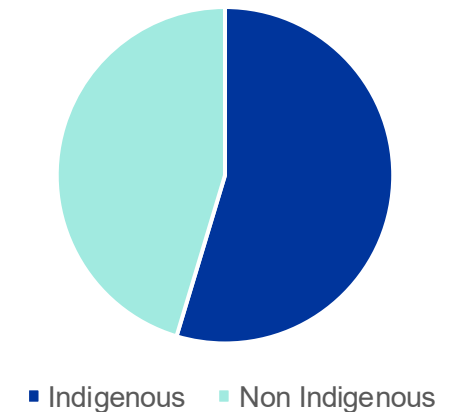
- Black n Blue Boxing
- Curlewis Public School
- Gunnedah Show Society
- Movember Foundation
- Narrabri & District Pony Club
- Narrabri High School
- Gunnedah Swimming Club
- Mullaley Cricket Club
- Inverell Bear Eaters Elders Group

## NSW Operations & Projects

Community Benefited



Otientation of Spend



Thank you



# Maules Creek Coal Mine Community Consultative Committee Meeting #52

## Environmental Monitoring Report For the Q4 period, October– December 2025

### **Attended Noise Monitoring**

Maules Creek Coal (MCC) engaged an independent acoustic consultant to conduct LAeq (15minutes) and LA1 (1 minute) attended noise monitoring at six monitoring locations on site.

#### **A. NOISE GENERATED BY MCCM AGAINST OPERATIONAL DAY & NIGHT NOISE CRITERIA; October - December 2025.**

The results show that MCCM is within EPL 20221 compliance limits, that operations did not exceed the applicable LAeq (15minute) 35dB Criteria, LA1 (1Minute) 45dB Criteria and the EPA's Noise Policy for Industry compliance guidelines.

**Table 1 –October Noise Monitoring**

Location	Start date and time	Wind		Stability class	Very enhancing? <sup>1</sup>	Limits, dB <sup>1</sup>		Site levels, dB <sup>2,3</sup>		Exceedances, dB	
		Speed m/s	Direction <sup>4</sup>			L <sub>Aeq,15minute</sub>	L <sub>A1,1minute</sub>	L <sub>Aeq,15minute</sub> <sup>5</sup>	L <sub>A1,1minute</sub> <sup>5</sup>	L <sub>Aeq,15minute</sub>	L <sub>A1,1minute</sub>
NM1	29/10/2025 22:30	0.6	353	F	No	35	45	<20	<20	Nil	Nil
NM2	29/10/2025 23:30	0.5	165	F	No	39	45	<20	<25	Nil	Nil
NM3	29/10/2025 23:24	0.4	150	F	No	35	45	<25	<25	Nil	Nil
NM4	29/10/2025 23:00	0.7	210	F	No	35	45	<20	<25	Nil	Nil
NM5	29/10/2025 22:00	0.7	11	F	No	35	45	<20	<20	Nil	Nil
NM6	29/10/2025 23:59	0.8	230	F	No	35	45	<20	<20	Nil	Nil

**Table 2 – November Noise Monitoring**

Location	Start date and time	Wind		Stability class	Very enhancing? <sup>1</sup>	Limits, dB <sup>1</sup>		Site levels, dB <sup>2,3</sup>		Exceedances, dB	
		Speed m/s	Direction <sup>4</sup>			L <sub>Aeq,15minute</sub>	L <sub>A1,1minute</sub>	L <sub>Aeq,15minute</sub> <sup>5</sup>	L <sub>A1,1minute</sub> <sup>5</sup>	L <sub>Aeq,15minute</sub>	L <sub>A1,1minute</sub>
NM1	18/11/2025 22:30	0.3	353	F	No	35	45	<20	<20	Nil	Nil
NM2	18/11/2025 23:30	0.3	38	F	No	39	45	<20	<20	Nil	Nil
NM3	18/11/2025 23:17	0.4	109	F	No	35	45	IA	IA	Nil	Nil
NM4	18/11/2025 23:00	0.4	168	F	No	35	45	IA	IA	Nil	Nil
NM5	18/11/2025 22:00	0.9	157	F	No	35	45	23	27	Nil	Nil
NM6	18/11/2025 23:56	0.3	87	F	No	35	45	IA	IA	Nil	Nil

**Table 3 – December Noise Monitoring**

Location	Start date and time	Wind		Stability class	Very enhancing? <sup>1</sup>	Limits, dB <sup>1</sup>		Site levels, dB <sup>2,3</sup>		Exceedances, dB	
		Speed m/s	Direction <sup>4</sup>			L <sub>Aeq,15minute</sub>	L <sub>A1,1minute</sub>	L <sub>Aeq,15minute</sub> <sup>5</sup>	L <sub>A1,1minute</sub> <sup>5</sup>	L <sub>Aeq,15minute</sub>	L <sub>A1,1minute</sub>
NM1	02/12/2025 22:30	0.8	207	D	No	35	45	<25	<25	Nil	Nil
NM2	02/12/2025 23:30	0.3	287	F	No	39	45	24	31	Nil	Nil
NM3	02/12/2025 23:18	0.5	325	F	No	35	45	IA	IA	Nil	Nil
NM4	02/12/2025 23:00	0.4	106	F	No	35	45	<20	<20	Nil	Nil
NM5	02/12/2025 22:00	1.1	207	D	No	35	45	<25	<25	Nil	Nil
NM6	02/12/2025 23:56	0.4	194	F	No	35	45	<25	<25	Nil	Nil

**Wind Direction during Attended Monitoring**

Wind direction data is collected from the Maule’s Creek Coal Mine (MCCM) Automated Weather Station (AWS). Wind data for the duration of the attended monitoring assessment, recorded at the MCCM AWS is presented in the table below.

**Table 4 - Prevailing Wind Direction**

Monitoring Date	Prevailing Wind Direction
October	SSW
November	ESE
December	SSW

**Blast Monitoring**

There was 29 blasts at MCCM during Q4 2025. All blast monitoring results recorded within the reporting period have complied with applicable overpressure and ground vibration limits specified in the respective approvals.

**Table 5 – Blast Results Summary**

Parameter	Units	Frequency	Number	Average	Max	100% Limit	Exceedance (Yes / No)
Noise	dB	All	29	93.42	109.6	120	No
Vibration	mm/s		29	0.08	0.32	10	No

## Air Quality

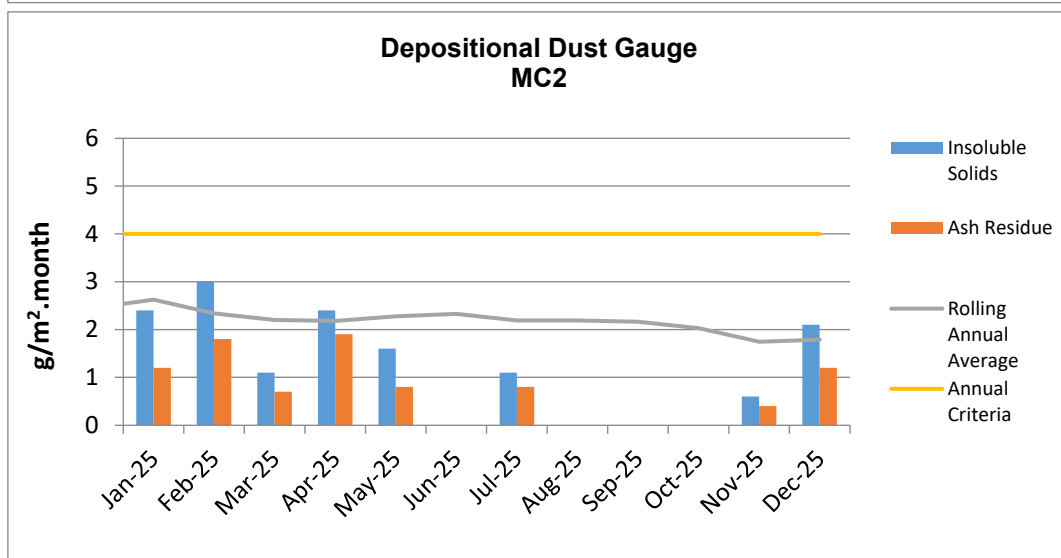
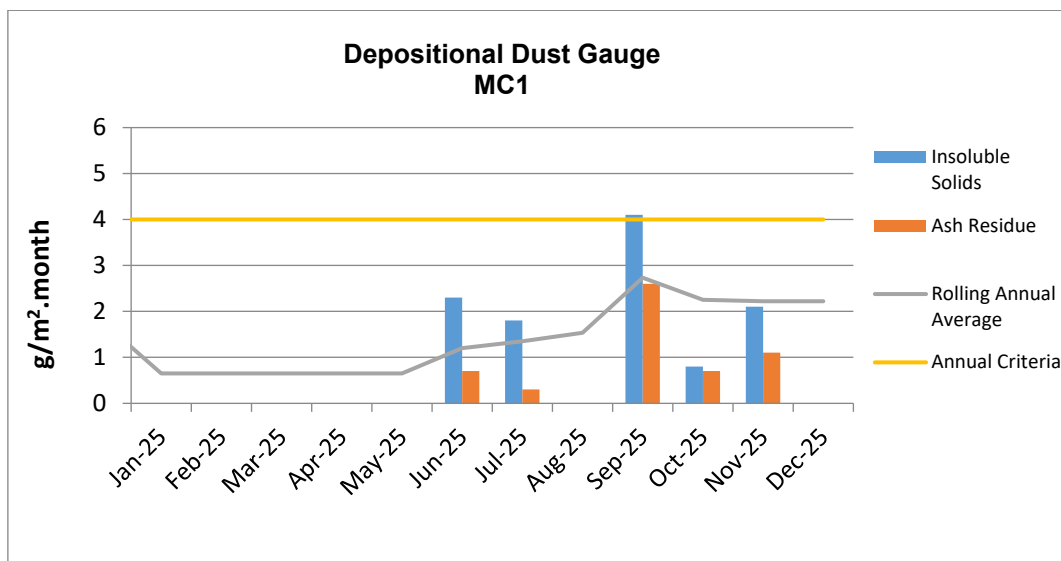
### A. Total Depositional Dust

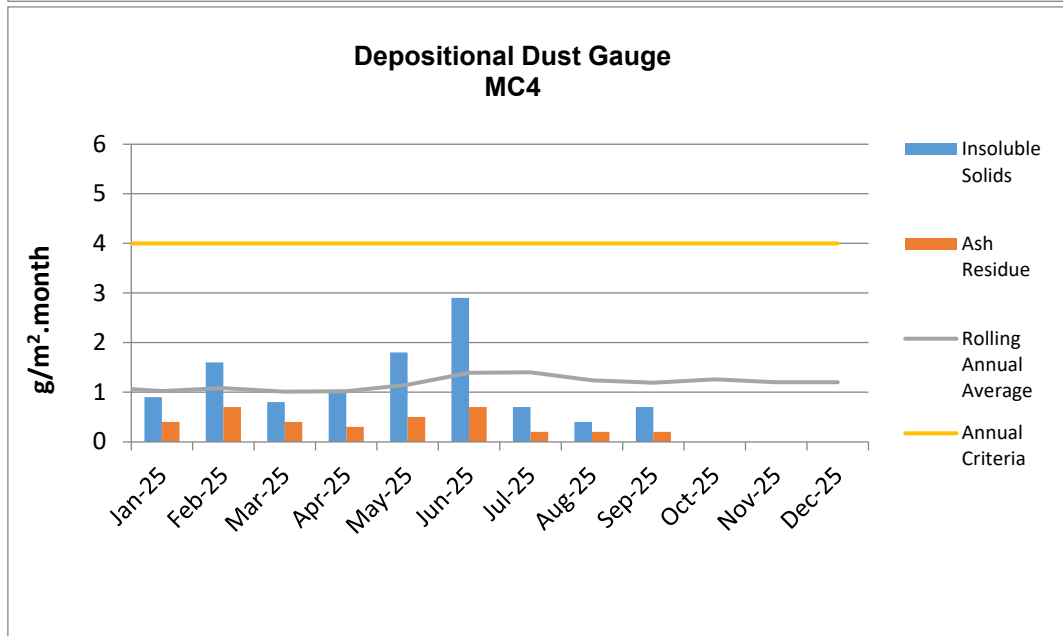
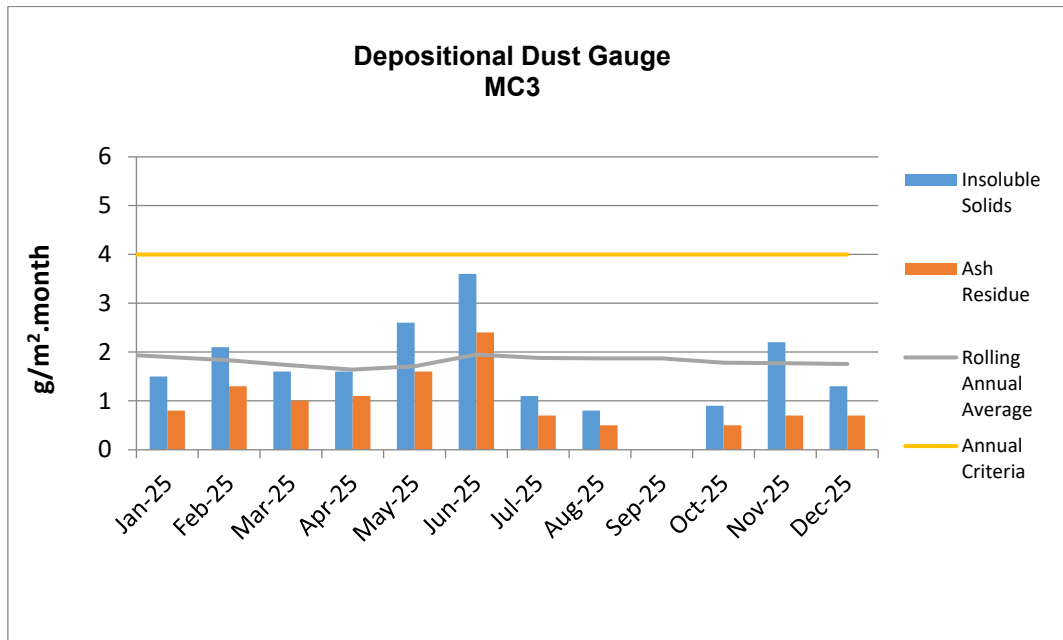
The 12 monthly rolling annual average remains below the relevant Project Approval (PA 10\_0138) criteria of 4g/m<sup>2</sup>/month for the respective monitoring points.

**Table 6 – Deposited Dust Gauge Results [g/m<sup>2</sup>/month]**

MONTH	MC1	MC2	MC3	MC4
October	0.8	4.4c	0.9	19.6c
November	2.1	0.6	2.2	7.7c
December	13.1c	2.1	1.3	11.9c
<b>12 MONTH ROLLING AVERAGE</b>	<b>2.2</b>	<b>1.8</b>	<b>1.8</b>	<b>1.2</b>

<sup>c</sup> samples contaminated by bird dropping, decomposed insects or vegetable matter.



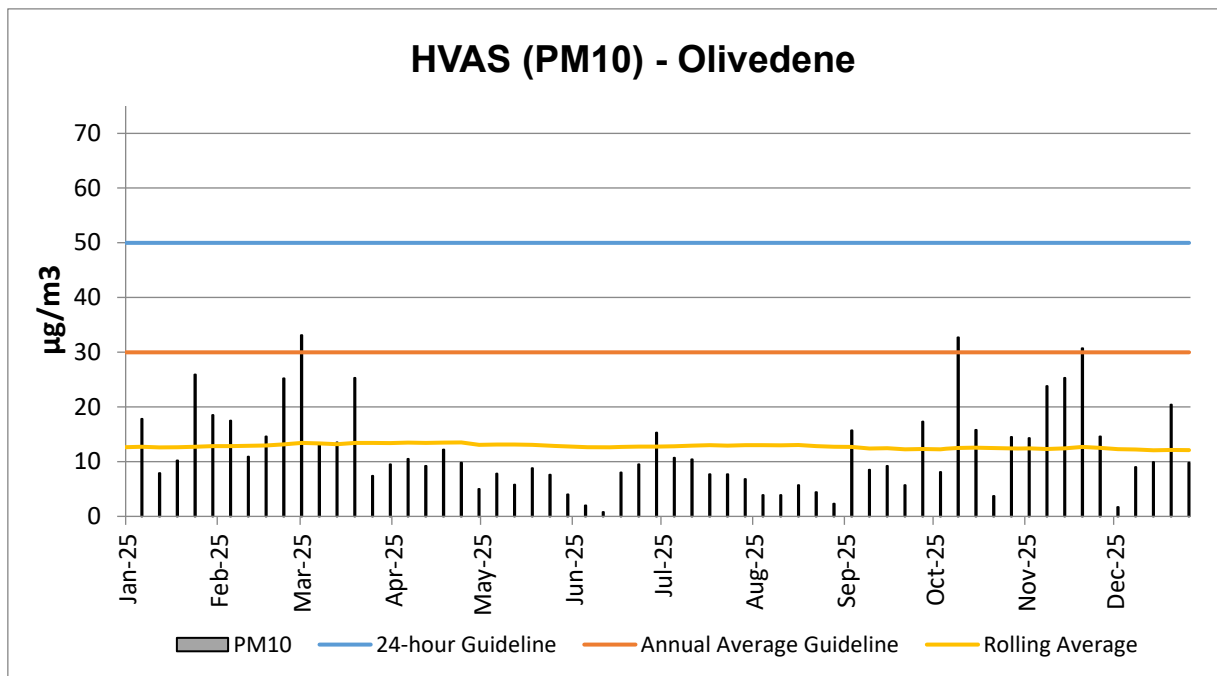


\* Blank cells indicate sample periods where the sample has been contaminated and excluded from the results tables due to contaminated material (insect larvae, bird droppings, vegetation etc.).

### B. High Volume Air Sampling (HVAS)

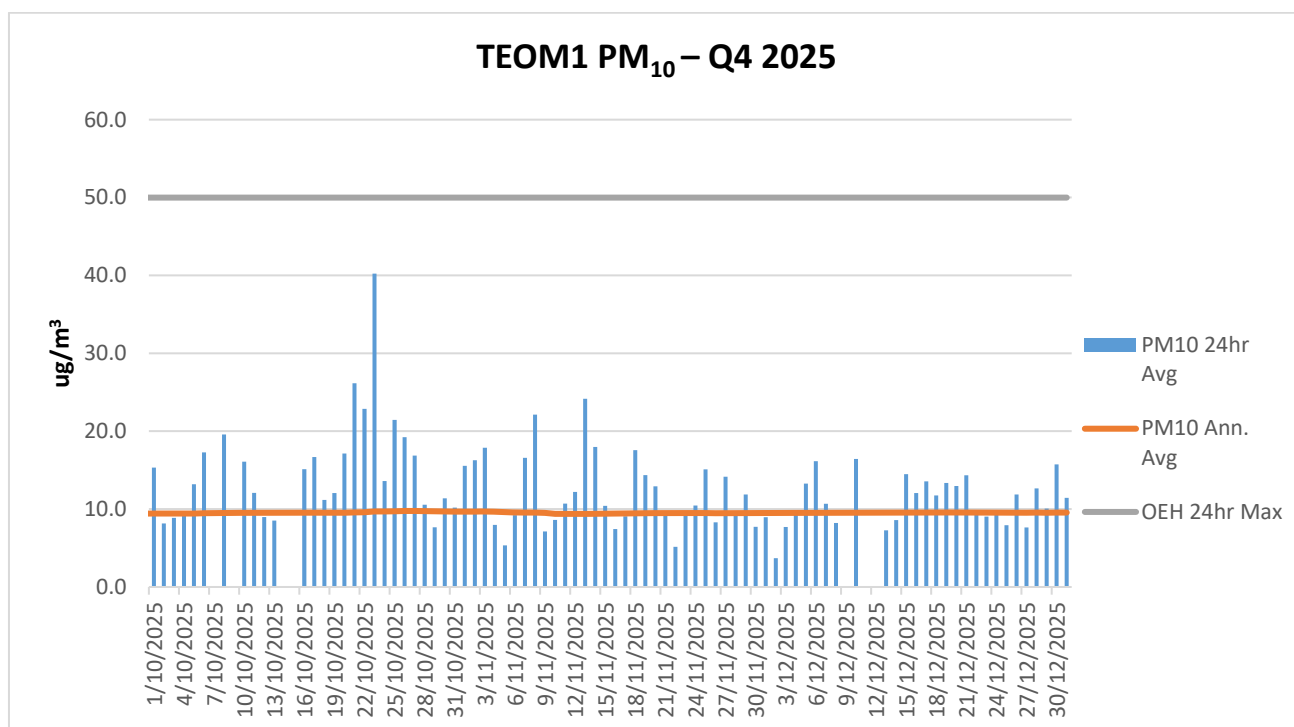
The HVAS monitor is located on the property 'Olivedene,' a mine owned property on Therribri Road. During past 12 months, there have been no exceedances of the 24-hour average of 50  $\mu\text{g}/\text{m}^3$ .

HVAS  $\text{PM}_{10}$  Rolling Annual Average as of the 31st December 2025 was **12.1  $\mu\text{g}/\text{m}^3$** , which is below the Annual Average Guideline of 30  $\mu\text{g}/\text{m}^3$ .



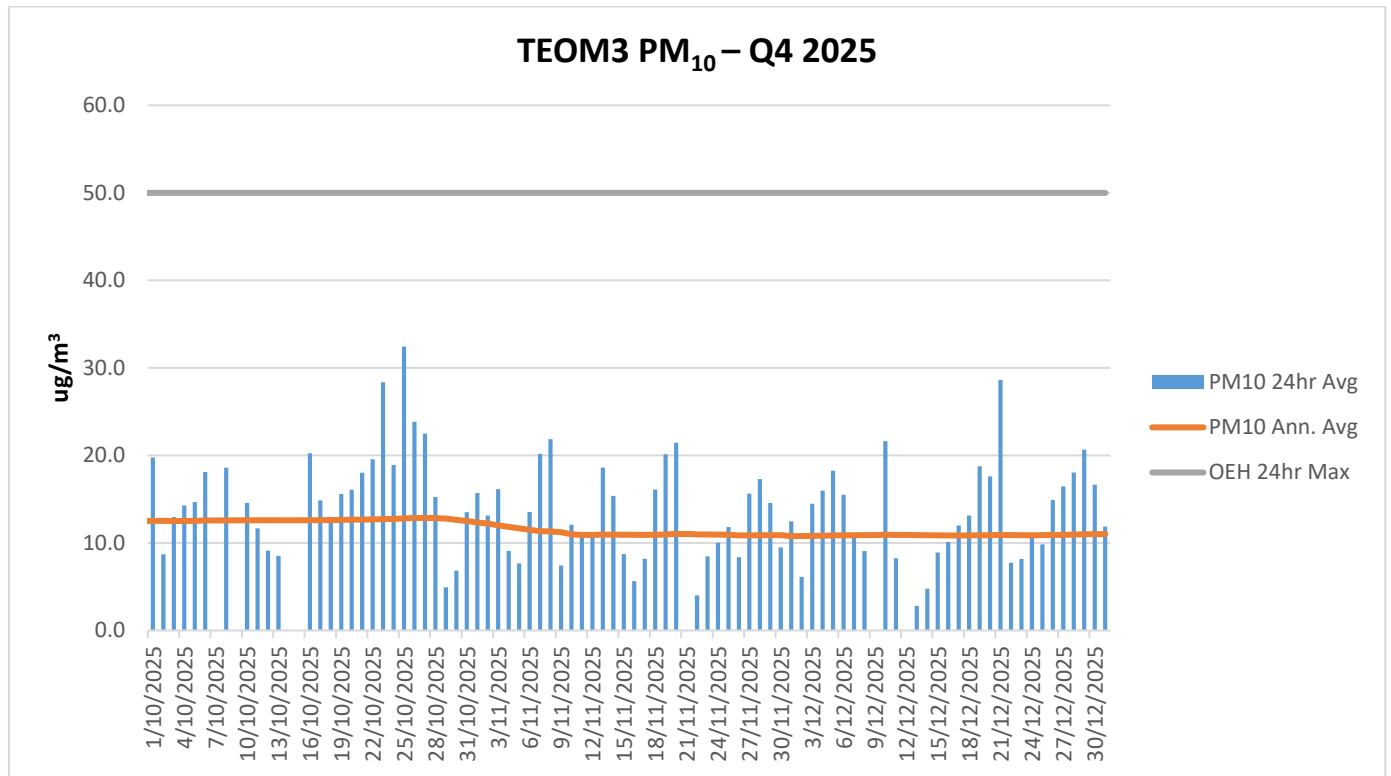
### C. TEOM - PM10 Results

The annual rolling average for  $\text{PM}_{10}$  at the Maules Creek Coal Mine for TEOM1 was **9.5  $\mu\text{g}/\text{m}^3$**  and at TEOM3 was **11.0  $\mu\text{g}/\text{m}^3$**  these are both below the Project Approval annual average criteria of 30  $\mu\text{g}/\text{m}^3$  as shown in the following figure.



**Figure 1 - TEOM Result – Particulate Matter  $\text{PM}_{10\mu\text{g}/\text{m}^3}$**

\* Blank columns indicate sample periods where there was either power outage, maintenance or other related causes.



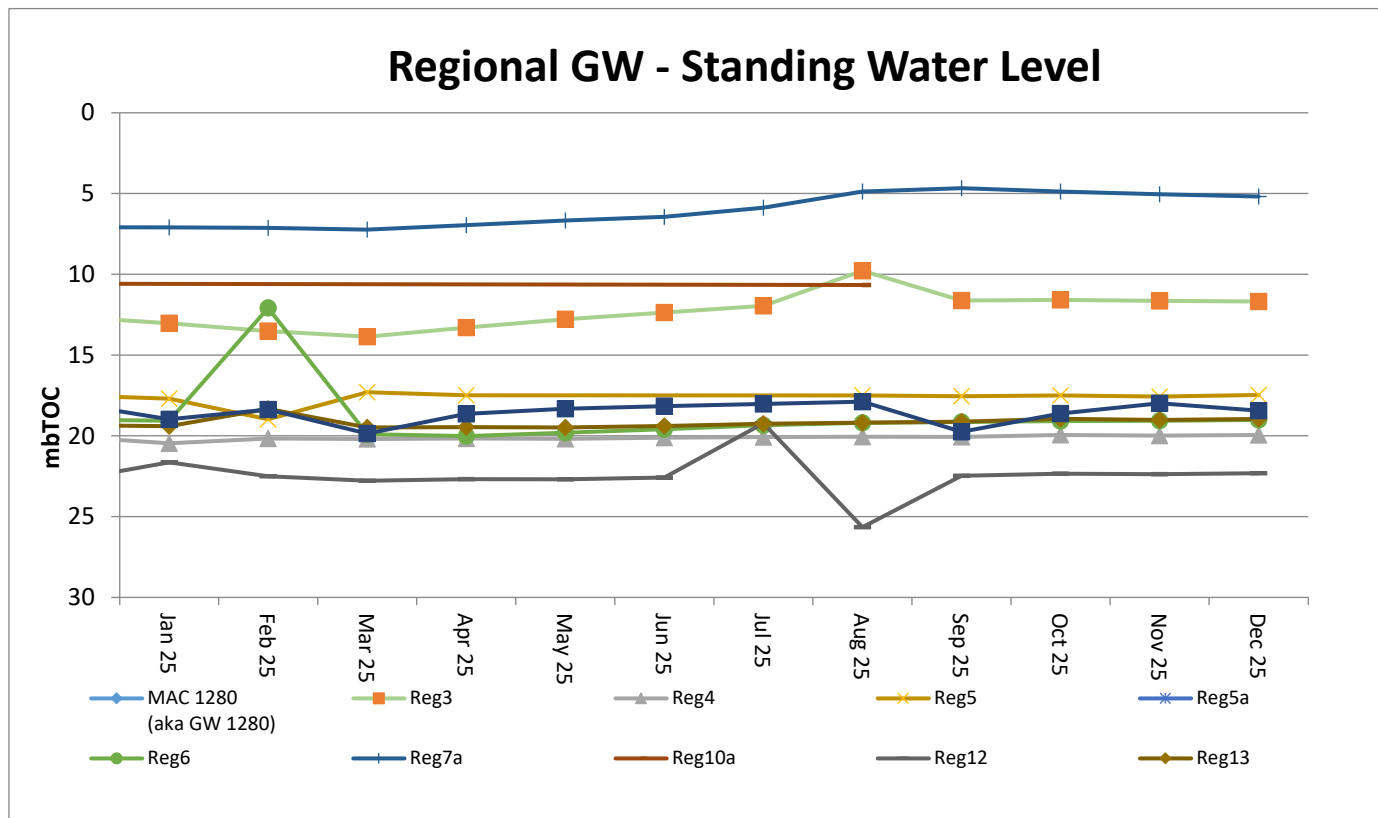
**Figure 2 - TEOM Result – Particulate Matter PM<sub>10</sub>µg/m<sup>3</sup>**

\* Blank columns indicate sample periods where there was either power outage, maintenance or other related causes.

## Water Monitoring

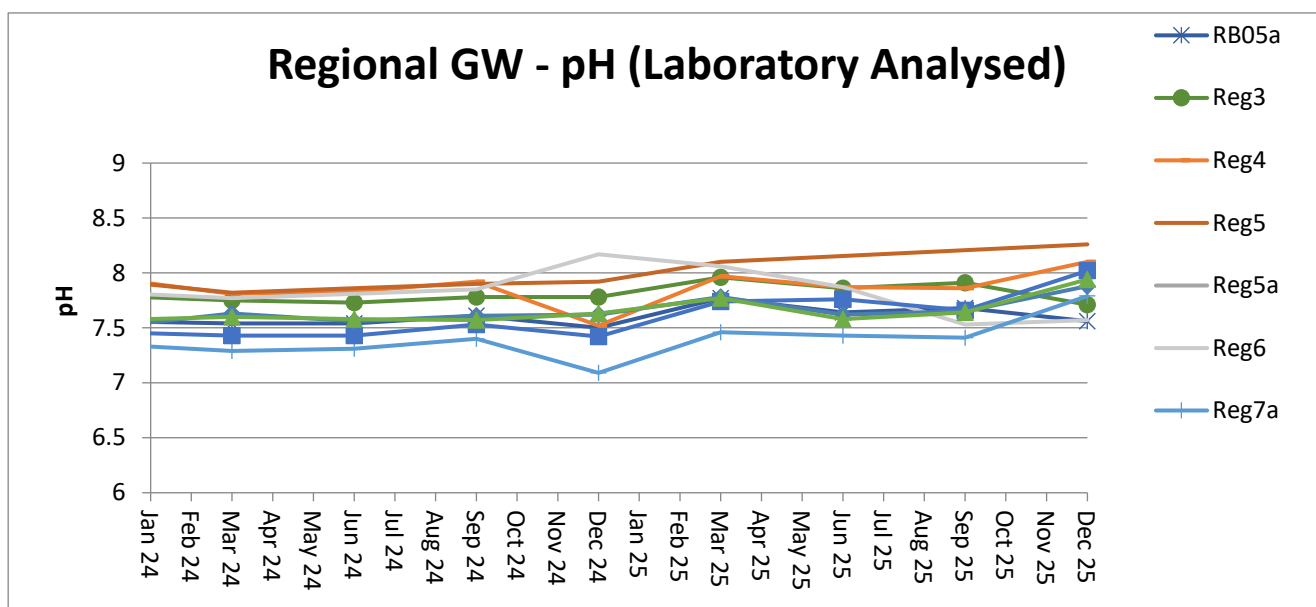
### A. Groundwater

Groundwater monitoring results in open standpipe piezometers show levels to be relatively stable. The Regional bores were installed between Q4, 2013 and Q1, 2014. BCM01, BCM03, Reg10 are shallow bores which have remained dry since construction in 2013.



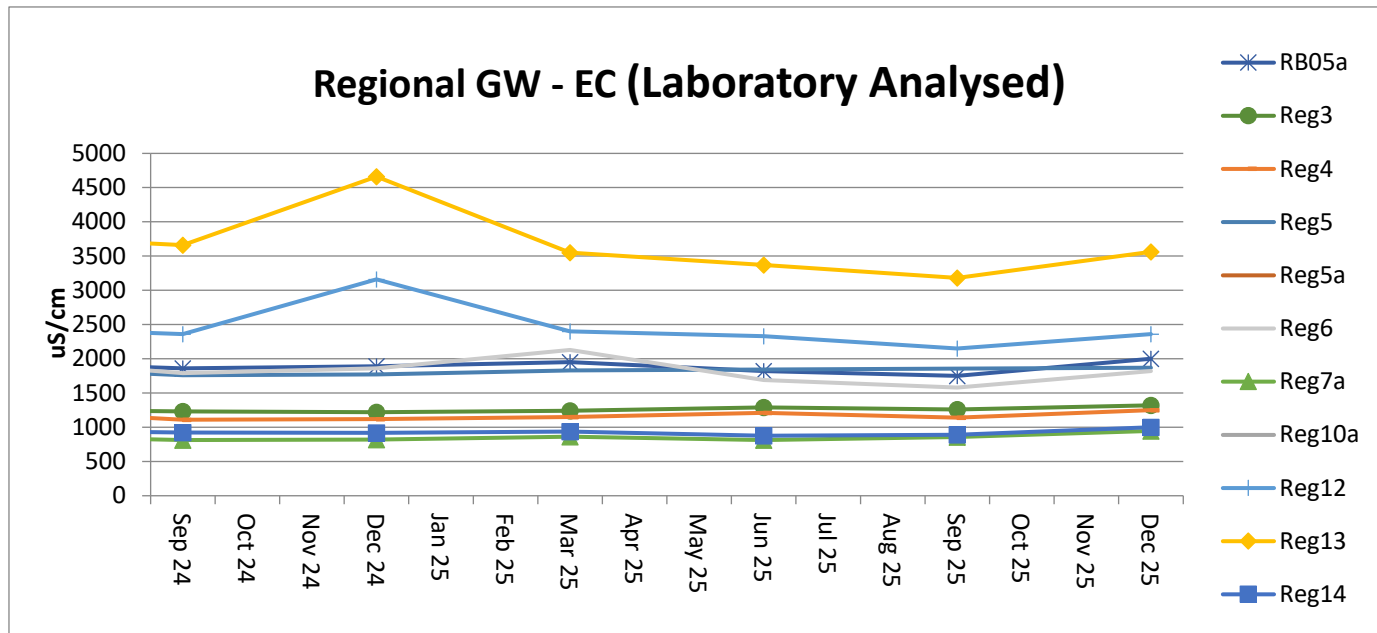
### Acidity / Alkalinity (pH)

Over the past twelve months pH readings across the regional bores have remained static with very little fluctuation.



### Electrical Conductivity

Laboratory Electrical Conductivity (EC) levels are all within historic groundwater EC range of 500 $\mu\text{S}/\text{cm}$  to 2,500 $\mu\text{S}/\text{cm}$ , with the exception of monitoring bore Reg13 which has a historic groundwater EC range of 2,500 $\mu\text{S}/\text{cm}$  to 4,100 $\mu\text{S}/\text{cm}$ .

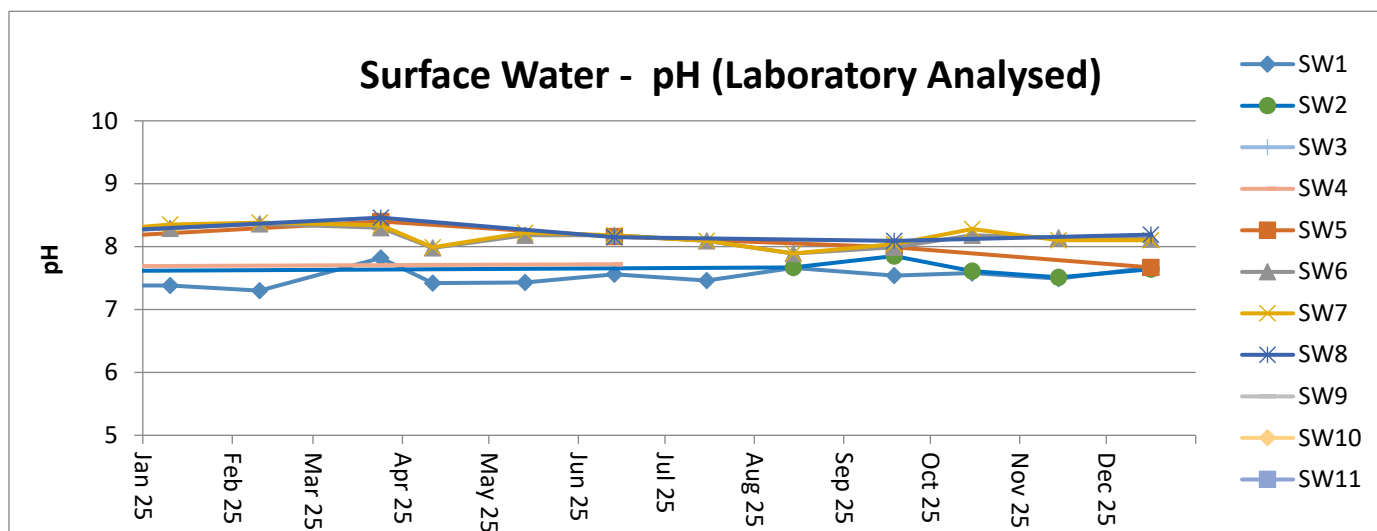


### B. Surface Water – Creeks and Rivers

Routine surface water monitoring is conducted in surrounding creeks and rivers on a monthly basis. Results for parameters including pH, EC and Total Suspended Solids (TSS) are shown in the figures below.

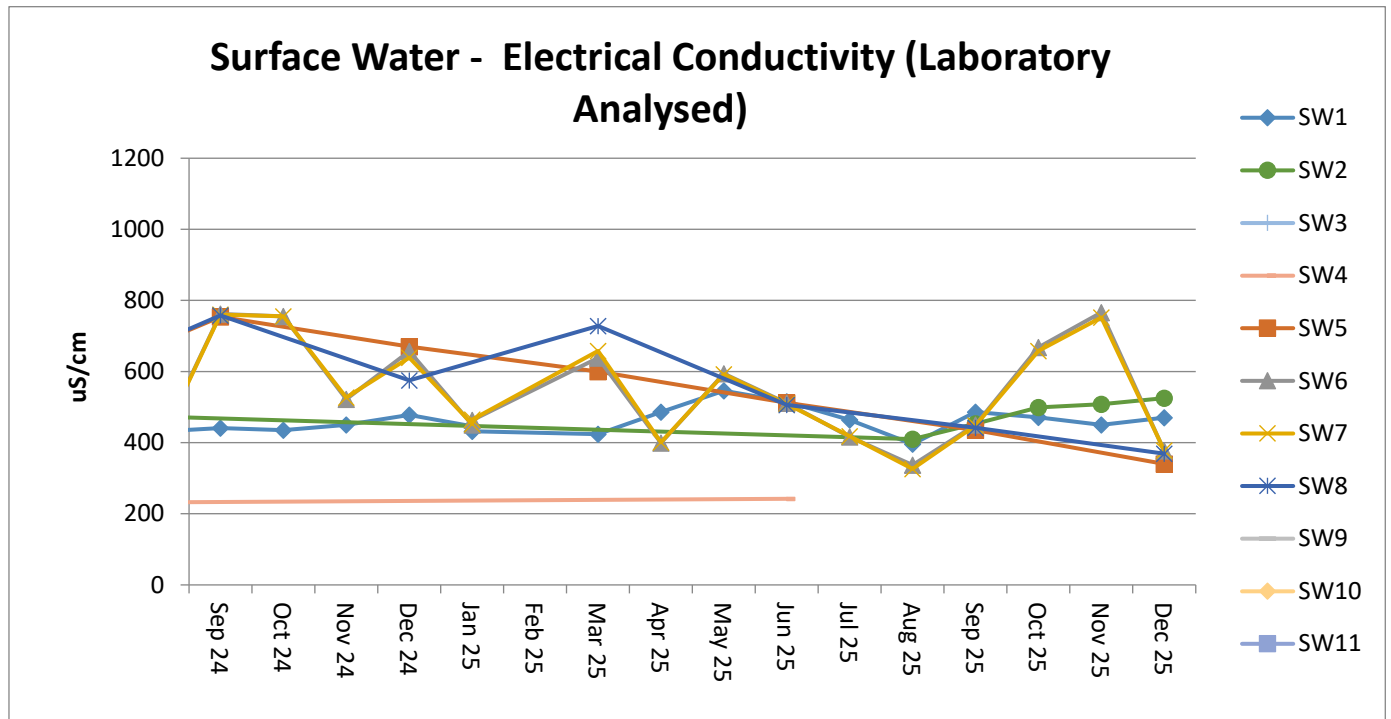
#### Acidity / Alkalinity (pH)

Monitoring results for pH in creeks and rivers surrounding MCCM are all trending within the ANZECC range for Irrigation, Ecosystem Health and Recreation.



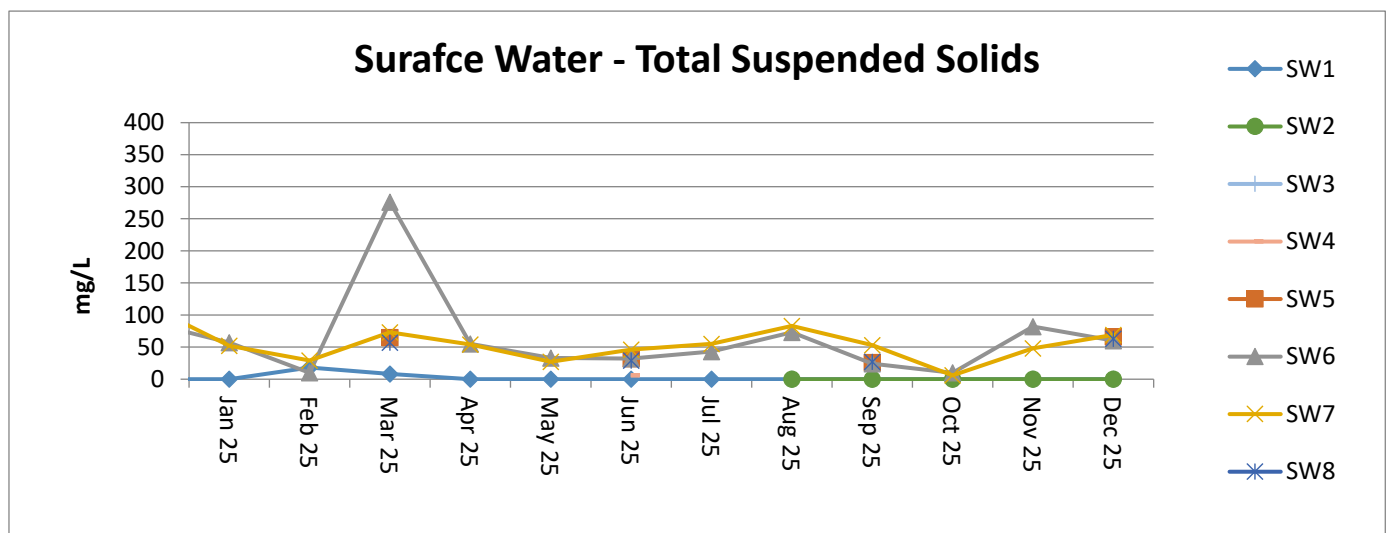
### Electrical Conductivity

Surface water EC trends have remained consistent with SW5, SW6, SW7 and SW8 all historically variable. SW5, SW6, SW7 and SW8 are points along the Namoi River which are subject to regulated and variable flow regimes.



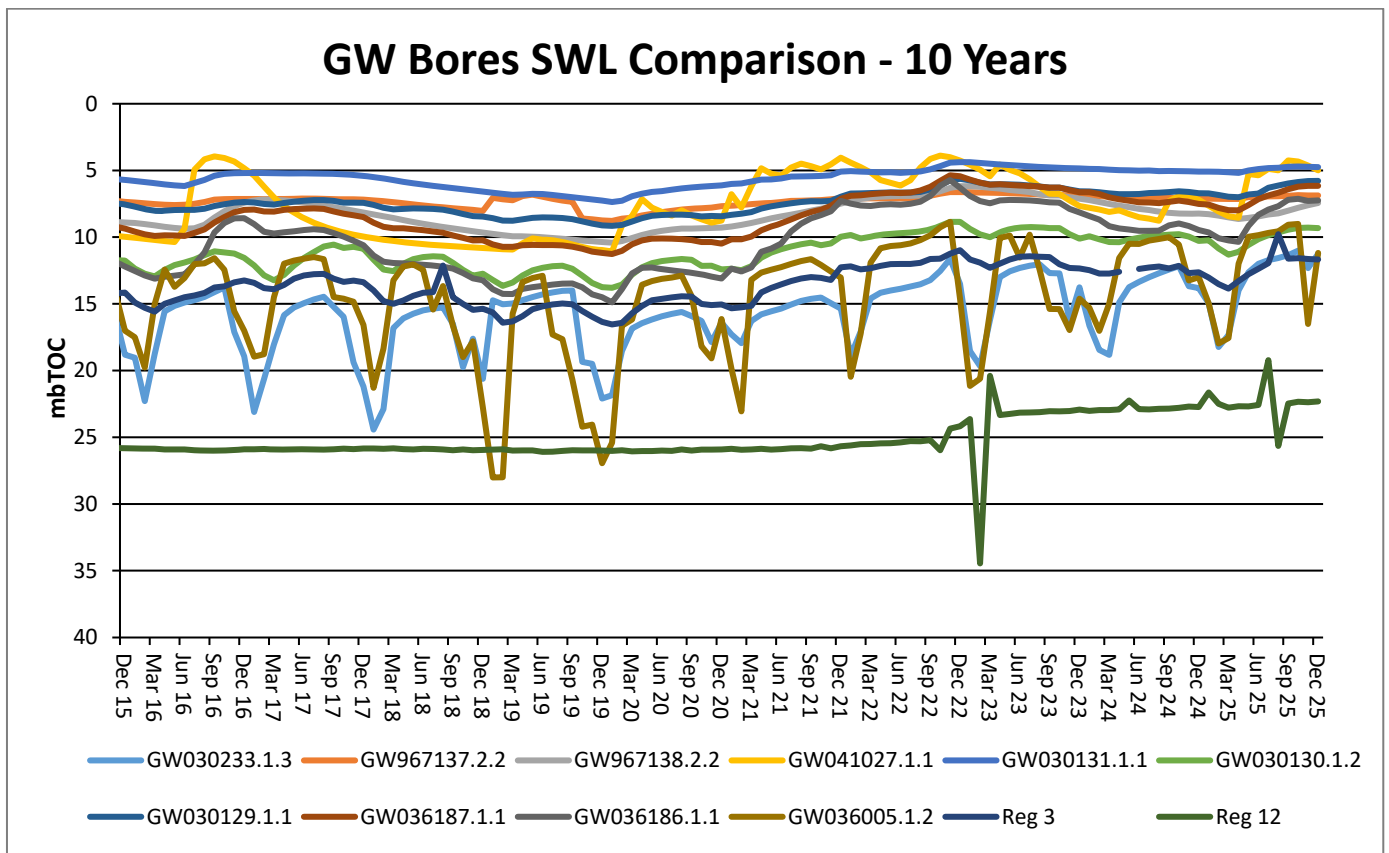
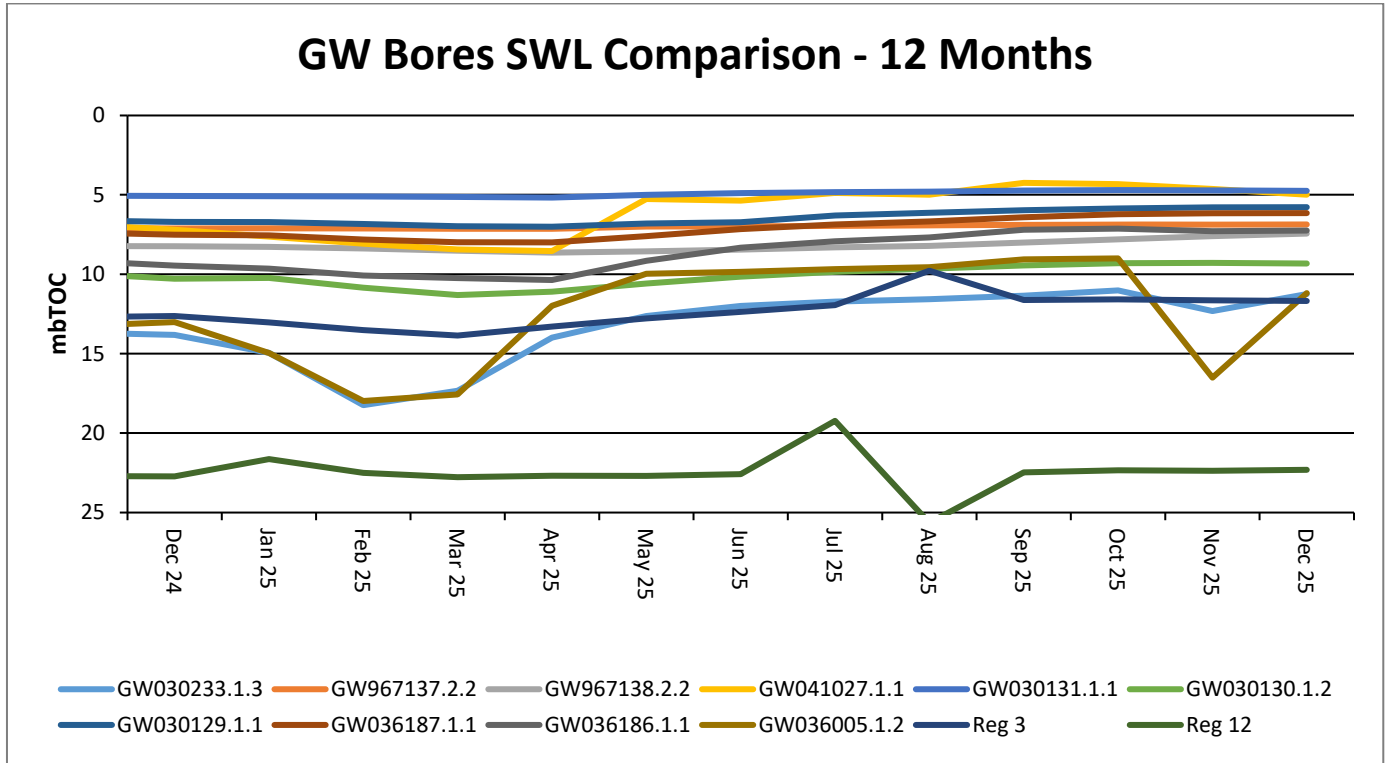
### Total Suspended Solids (TSS)

Surface water TSS trends have remained generally consistent with historical results. SW5, SW6, SW7 and SW8 are historically variable as they are located along the Namoi River which is subject to regulated and variable flow regimes.



### Regional Groundwater monitoring

Maules Creek Coal Mine monitors regional bores across the region.



## **Rehabilitation**

Progressive rehabilitation works are ongoing. MCC completed the CY2025 rehabilitation on the 20<sup>th</sup> of October 2025, in accordance with the Forward Plan.

## **Feral Animal Management**

Most recent routine Whitehaven Biodiversity Feral Animal Control program (October to December 2025) results were:

- 1,120 out of total 1,732 feral pigs removed were from the Maules Biodiversity properties;
- 199 out of the total 371 feral goats removed were from the Maules Biodiversity properties;
- 146 out of total 283 Canid Pest Ejectors (1080) triggered, or foxes removed were from the Maules Biodiversity properties.

## **Weed Control**

During October to December 2025 the following weed control was undertaken via spot spraying/jetting on the Maules Biodiversity Properties:

- 31.8ha of Woody Weeds (Sweet Briar, Blackberry and Prickly Pear) were sprayed.
- 10.6ha of Grasses (Coolatai Grass, African Lovegrass and Rhodes Grass) were sprayed.
- 66.8ha of Broadleaf Weeds such as General Broadleaf, Pattersons Curse, St Johns Wort, Noogoora Burr, Fleabane, Saffron Thistle, General Thistles & Variegated Thistles were sprayed.
- 193.5ha of tracks sprayed as part of the track maintenance.

## **Upcoming Biodiversity Projects and Works**

- Continue Pest Animal Management Program January to March 2026;
- Continue Seasonal Weed Control Programs;
- Continue Firebreak Track Maintenance Program;
- Continue Property Development for Track and Fencing Works;
- Continue Threatened Flora Translocation Program maintenance;
- Complete Heritage Management construction works;
- Commence Annual Ecological Burn Program planning;
- Commence Revegetation Tree Planting.

## **Community Complaints**

There was no community complaints registered during the quarter, all community complaints are available on the company website at <https://whitehavencoal.com.au/our-business/our-assets/maules-creek-mine/>.

